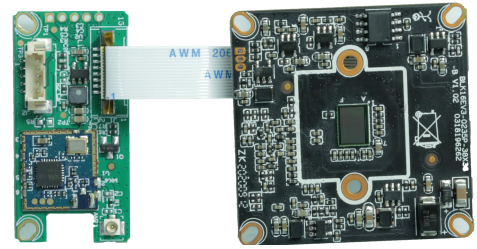


**IVG-G5-WPNG**

## 5.0M Wireline-WiFi IP camera Module

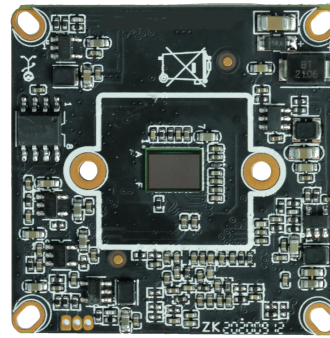
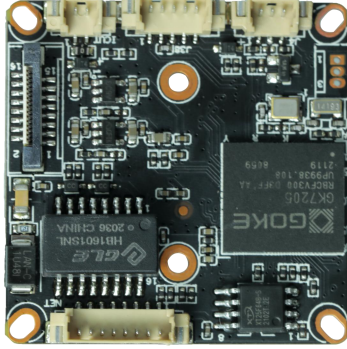
**Features:**

- 5.0M resolution low illumination clear and fine images;
- Support for wired and wireless connections;
- Support 2D/3D noise reduction,digital wide dynamic;
- Advanced H.265+ (Compatible with H.265/H.264) video compression,Super low rate,high definition quality of image;
- Professional anti-lightning,conform to GB/T17626.5 and IEC61000-4-5。
- Support mobile phone monitoring(iOS, Android);
- Provide web、CMS、 provide SDK development
- Support cloud technology,easy to achieve network penetration,fro in-line and alarm information pushed


**Parameters:**

Model	IVG-G5-WPNG
System structure	Embedded RTOS, dual-core 32-bit DSP (GK7205V300),pure hard compression ,watch dog
Sensor	5.0M 1/2.7"low illumination CMOS sensor ,color 0.01Lux@F1.2,black/white 0.001Lux@F1.2
Video compression	H.265+ (Compatible with H.265/H.264) coding,support dual stream,AVI;0.1M~10Mbps variable
Image output	Main stream: 2880*1616@12fps,2560*1440@12fps,2304*1296@12fps; ; sub-stream: 640*360@12fps
Shutter	1/50(1/60)s to 1/10,000s
Lens	N/A
Day and night	Support IR-CUT
Noise reduction	Support 2D/3D
Wide dynamic	Support
Auto iris	N/A
Audio compression	G.711 standard compression,support two-way Bidirectional Talk,support for audio and video synchronization
Audio interface	1ch input,level:2Vp-p,impedance:1kΩ,support sound pick-up input;1ch output,impedance:16Ω,30mw,support microphone;
Network interface	1 RJ45 Ethernet interface, 10/100M adaptive(Merge with power interface)
Extension interface	N/A
Singal interface	one IR-CUT interface
PTZ	N/A
Motor interface	N/A
Alarm I/O	N/A
WIFI interface	Supports wireless connections
Reset interface	Support
Storage mode	N/A
Reliability	Comprehensive lightning protection, 7 * 24 hours 65 ℃ high temperature stable and reliable testing
Intelligence analysis	Supporting Face detection ,human detection and customizing other intelligent functions
Other function	It supports remote monitoring of mobile client, push message after alarm of human figure detection, and supports MJPEG capture;
ONVIF	Unsupport
Mobile monitoring	Support
Power	DC12V
Dimension	38mm*38mm+38mm*19mm
Other	he drive voltage of the light board is at 3.3V

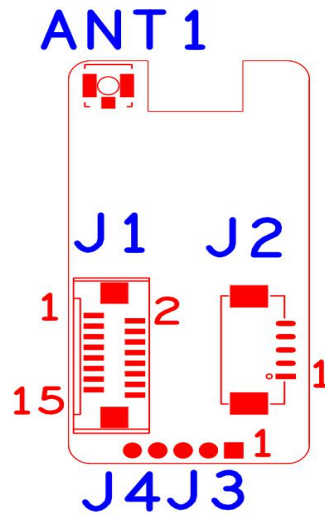
P2 IRCUT P6 Audio and alarm P3 Infrared



P1 Power&amp;NET

Socket	Specific No	Interface Description	Function	Socket
P2	J5	1	IC-CUT	IC-CUT
		2	IC-CUT	IC-CUT
P3	J4	1	IRC_GPIO8_0	Hard photosensitive infrared signal control
		2	GND	GND
		3	GPI06_6/PWM2	Soft infrared signal control
P6	J38	1	AC_OUTL	AUDIO_OUT
		2	AC_LINEL	AUDIO INPUT
		3	GND	GND
		4	W_LED	White light interface
		5	GND	GND
P1	J3	1	LED/PHY_ADO	LED/PHY_ADO
		2	LED/PHY_AD1	LED/PHY_AD1
		3	ETHTX+	Ethernet signal+
		4	ETHTX-	Ethernet signal-
		5	ETHRX+	Ethernet signal+
		6	ETHRX-	Ethernet signal-
		7	GND	GND
		8	12V	12V INPUT

## WIFI expansion board interface definition



Socket	Interface Description	Function			
J2	5P 1.25mm WIFI extension socket	1:GND	2:USB_DP	3:USB_DM	4:+3.3V
		5:USB_CTRL			
J1	16P double row FPC WIFI extension socket	1:NC	2:NC	3:NC	4:NC
		5:NC	6:NC	7:NC	8:GND
		9:NC	10:NC	11:GND	12:NC
		13:USB_DM	14:USB_DP	15:+3.3V	16:USB_CTRL
ANT2	IPEX antenna interface				
J4	Reserve pin header to expand WIFI interface				
J3	Reserve pin header to expand WIFI interface				