

IVG-HP203Y-AE

2.0M star-light illumination H.265 Intelligent analysis Network Camera Module

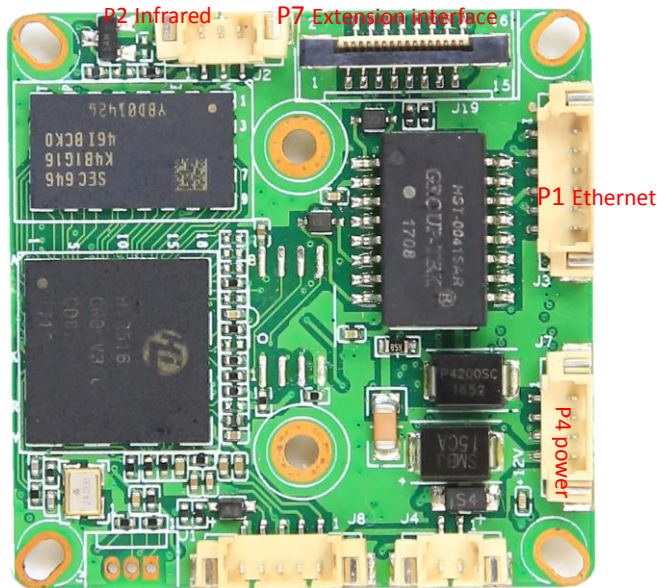
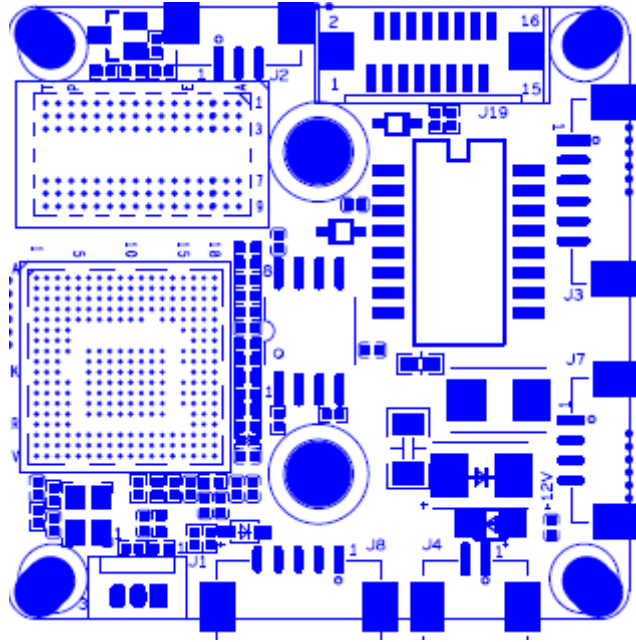
Features:

- 2.0M star-light illumination HD resolution,clear and fine images, Autofocal;
- Support multiple intelligent analysis;
- Support 2D/3D noise reduction,digital wide dynamic;
- Advanced H.265/H.264 video compression,Super low rate,high definition quality of image;
- Professional anti-lightning,conform to GB/T17626.5 and IEC61000-4-5。
- Support ONVIF ,access third party;
- Support various mobile monitoring(iPhone,Android);
- Provide web、CMS、 center platform management software MYEYE,provide SDK development
- Support cloud technology,easy to achieve network penetration,fro in-line and alarm information pushed



Parameters:

Model	IVG-HP203Y-AE
System structure	Embedded RTOS,dual-core 32bit DSP(Hi3516CV300),pure hard compression ,watch dog
Sensor	2.0M 1/2.8" IMX291 star-light illumination CMOS sensor ,color 0.0001Lux@F1.2,black/white 0.0001Lux@F1.2
Video compression	H.265/H.264,support dual stream,AVI;0.1M~8Mbps variable;1~30f/s variable
Image output	Main stream: 1920*1080@25fps, 1280*720@25fps; sub-stream: 704*576@25fps;
Shutter	1/50(1/60)s to 1/10,000s
Lens	N/A
Day and night	Support IR-CUT, IR-CUT coil has an internal resistance of 20 ohms, the power-on time is less than 200ma, and the voltage is 3.5V-6V
Noise reduction	Support 2D/3D
Wide dynamic	Support
Auto iris	N/A
Audio compression	G.711,support bidirectional talk,audio&video synchronization
Audio interface	1ch input,level:2Vp-p,impedance:1kΩ,support sound pick-up input;1ch output,impedance:16Ω,30mw,support microphone;
Network interface	1*RJ45 10/100M adaptive Ethernet port;support RTSP/FTP/PPPOE/DHCP/DDNS/NTP/UPnP etc
Extension interface	1*USB,support WIFI/3G,support SD: 1ch Alarm output; reset key; 1ch Alarm input or LED panel; RTC battery
Singal interface	One photo resistance interface,one IR-CUT interface ,support photo resistance signal and IR-CUT links to IR
PTZ	N/A
Motor interface	N/A
Alarm I/O	1/0(support alarm input and video link to background)
WIFI interface	N/A
Reset interface	N/A
SD Card	N/A
Reliability	Comprehensive lightning protection, 7 * 24 hours 65 °C high temperature stable and reliable testing
Intelligence analysis	Alarm line,alarm region,goods stranded,video block,fuzzy detection,scene change
Other function	Support WEB,OSD,live video transmission,motion detect and IO alarm,front-end storage/playback/download, and center reminder and image linkage,support JPEG capture; united remote client monitoring sofaware、MYEYE;perfect SDK;
ONVIF	Support
Mobile monitoring	Support multiple mobile monitoring (iOS, Android)
Power	DC12V/2A input, power consumption:≤3W,
Dimension	38mm*38mm, The drive voltage of the light board is at 3.3V



P6 Alarm Audio P3 IRcut

sign	Socket	Specific No	Interface Description	Function
P1	J3	1	ETHRX-	Ethernet signal
		2	ETHRX+	Ethernet signal
		3	LED/PHY_AD3	LED
		4	ETHTX-	Ethernet signal
		5	ETHTX+	Ethernet signal
		6	LED/PHY_AD0	LED
P2	J2	1	Infrared input	Infrared input
		2	GND	GND



		3	+5V	5V DC input
P3	J4	1	BOUT	IRCUT output
		2	AOUT	IRCUT output
P4	J7	1	NC	Undefined
		2	NC	Undefined
		3	GND	GND
		4	12V	12V DC input
P5	J1	1	UART_RX	
		2	UART_TX	
		3	GND	GND
P6	J6	1	AC_OUT	AC_OUT
		2	MIC_P	MIC_P
		3	GND	GND
		4	ALARM_IN	ALARM_IN
		5	GND	GND
P7	J19	1	SD_CLK	SD_CLK
		2	SD_CMD	SD_CMD
		3	SD_DATA0	SD_DATA0
		4	SD_DATA1	SD_DATA1
		5	SD_DATA2	SD_DATA2
		6	SD_DATA3	SD_DATA3
		7	LED_CTRL	LED_CTRL
		8	GND	GND
		9	Key-set	Key-set
		10	BAT	RTC RTC battery input
		11	GND	GND
		12	ALARM_OUT	ALARM_OUT
		13	USB_DM	USB_DM
		14	USB_DP	USB_DP
		15	+5V	+5V
		16	USB_CONTRL	USB_CONTRL