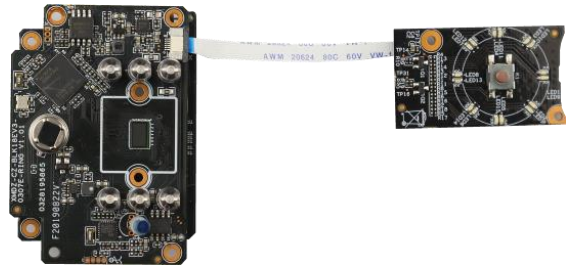


## LPG-DG2

2.0M Low power intelligent doorbell wireless HD camera module

### Features:

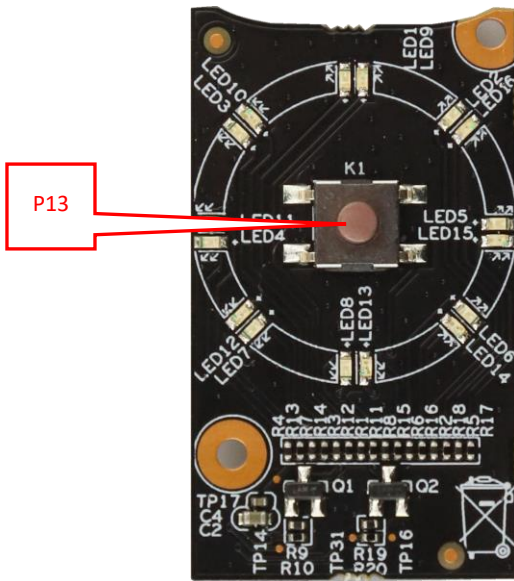
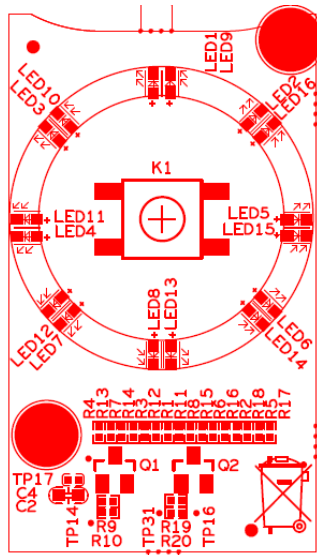
- 2.0M resolution, clear and fine images;
- PIR infrared human sensor to support passive infrared sensing;
- The standard is equipped with 24V AC charging module and doorbell pressing module;
- Support 2D/3D noise reduction, digital wide dynamic;
- Advanced H.265X video compression, Super low rate ,high definition quality of image;
- Professional anti-lightning, conform to GB/T17626.5 and IEC61000-4-5.
- Support mobile phone monitoring(iOS, Android);
- Support cloud technology ,easy to achieve network penetration, fro in-line and alarm information pushed



### Parameters:

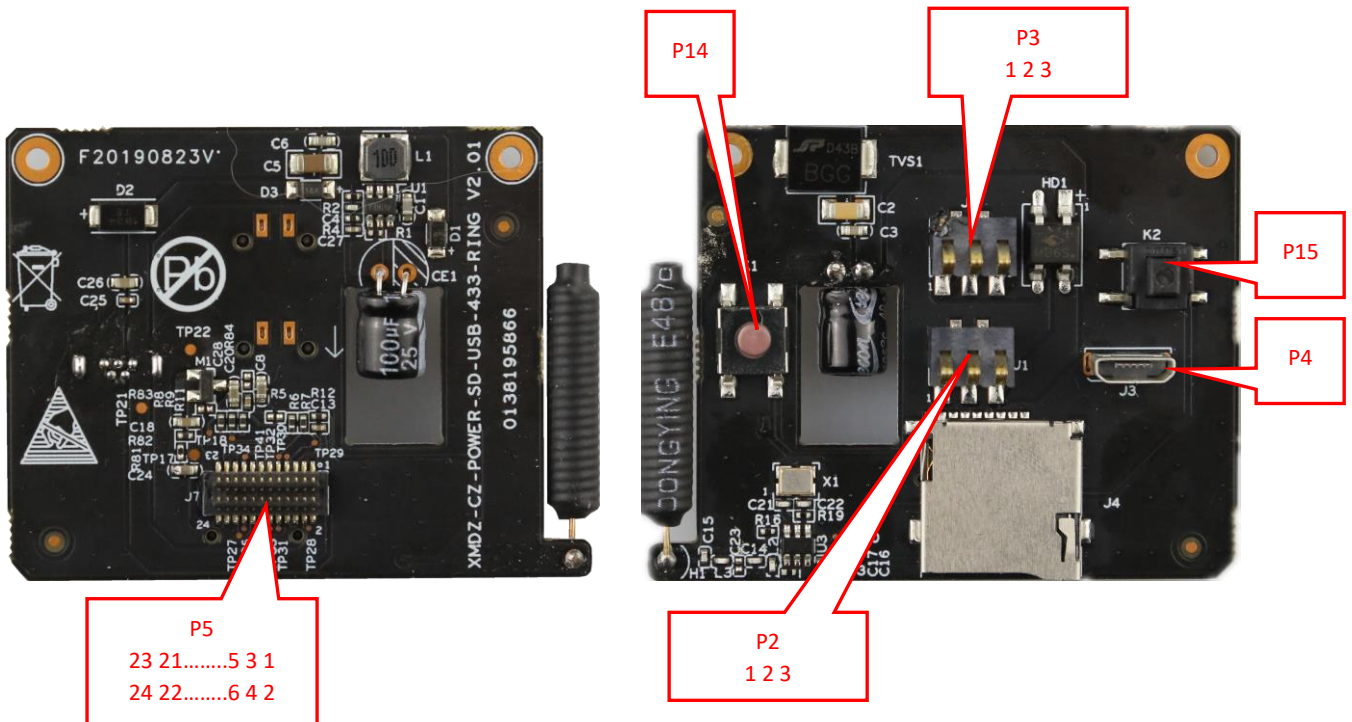
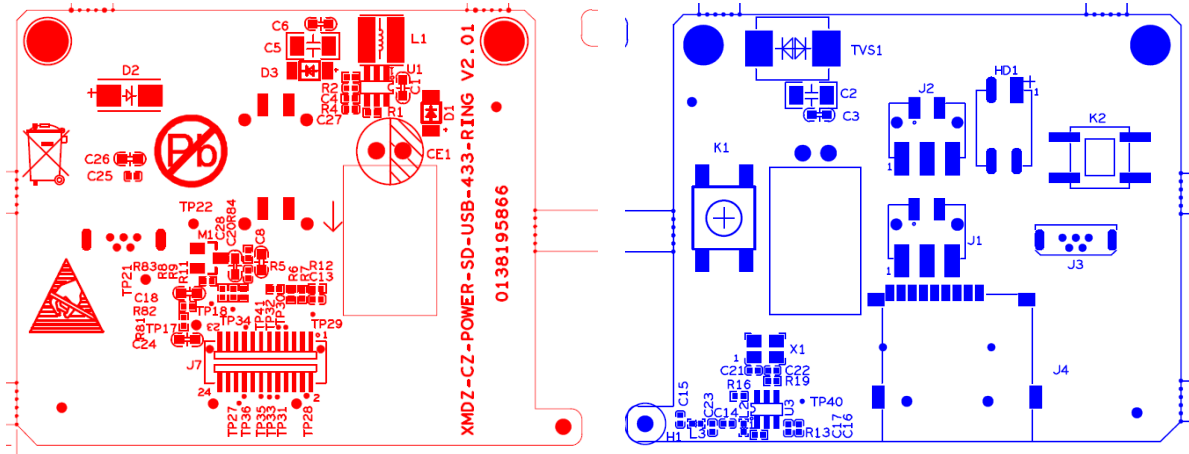
Model	LPG-DG2
System structure	Embedded RTOS, dual-core 32-bit DSP ( Hi3518EV300),pure hard compression ,watch dog
Sensor	2.0M 1/2.9"SC307E CMOS sensor ,color 0.1Lux@F1.2,black/white 0.01Lux@F1.2
Video compression	H.265X,support dual stream,AVI;0.1M~8Mbps variable
Image output	Main stream: 1920*1080@6fps,sub-stream: 704*576@6fps
Shutter	1/50(1/60)s to 1/10,000s
Lens	N/A
Day and night	Support IR-CUT
Noise reduction	Support 2D/3D
Wide dynamic	Support
Auto iris	N/A
Audio compression	G.711 standard compression, support two-way Bidirectional Talk, support for audio and video synchronization
Audio interface	1ch input,level:2Vp-p,impedance:1kΩ,support sound pick-up input;1ch output,impedance:16Ω,30mw,support microphone;
Network interface	N/A
Extension interface	N/A
Singal interface	one IR-CUT interface
PIR	Support
Motor interface	N/A
Alarm I/O	N/A
WIFI interface	Support wireless connections
Reset interface	Support
SD Card	Support
Reliability	Comprehensive lightning protection,7 * 24 hours 65 °C high temperature stable and reliable testing
Intelligence analysis	NO
Other function	Support for smart alarms; Support APP remote monitoring software; Full SDK development package
ONVIF	NO
Mobile monitoring	Support multiple mobile monitoring ( ios,Android )
Power	Power(optional):DC5V, DC24V,2*18650
Dimension	Low Power Doorbell
Other	N/A

BRD\_XMDZ-CZ-LED-KEY-FPC-RING-V1\_01



sign	Socket	Specific No	Interface Description	Function
P1	J1	1	3.3V	3.3V Power input
		2	GND	GND
		3	GND	GND
		4	SET_GPIO03	Doorbell button signal
		5	MCU_LED2	Led control signal 1
		6	MCU_LED1	Led control signal 2
P13	K1	1	GND	GND
		2	GND	GND
		3	SET_GPIO03	Doorbell button signal
		4	SET_GPIO03	Doorbell button signal

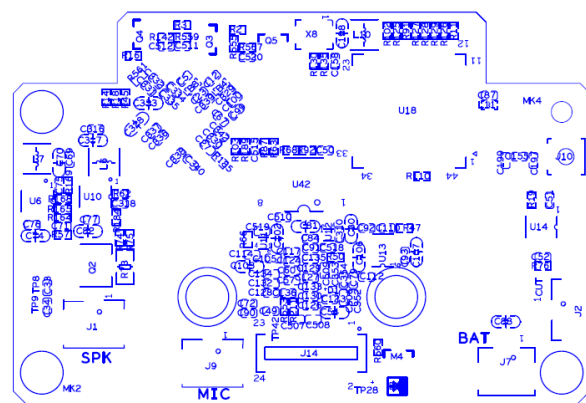
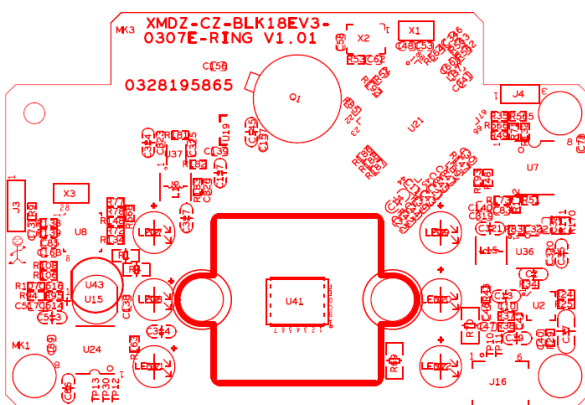
BRD\_XMDZ-CZ-POWER-SD-USB-433-RING-V2\_01

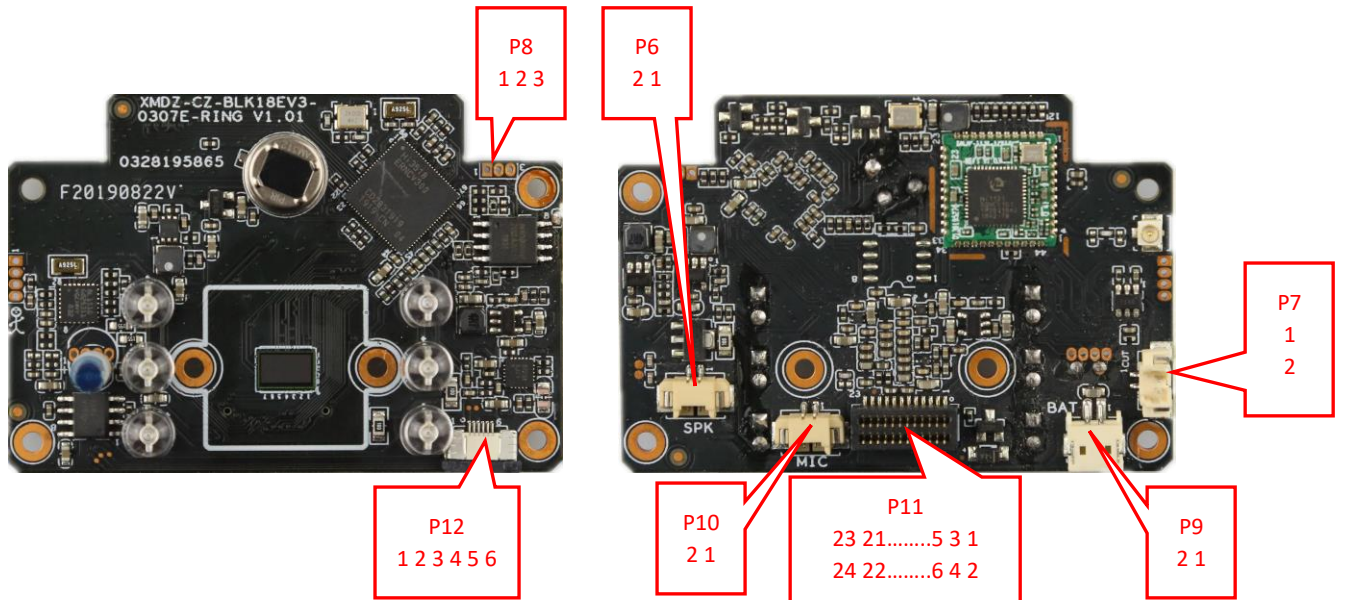


sign	Socket	Specific No	Interface Description	Function
P2	J1	1	AC24+	AC24 V+ input
		2	AC24+	AC24V+ input
		3	AC24+	AC24V+ input
P3	J2	1	AC24-	AC24V- input
		2	AC24-	AC24V- input
		3	AC24-	AC24V- input
P4	J3	1	+5V	USB5V Power input
		2	Nc	/
		3	Nc	/
		4	Nc	/
		5	Gnd	Gnd
		6	Gnd	Gnd

		7	Gnd	Gnd
P5	J7	1	+5V	5V Power input
		2	+5V	5V Power input
		3	Gnd	Gnd
		4	+5V	5V Power input
		5	Gnd	Gnd
		6	Gnd	Gnd
		7	SD_EN	SD_EN
		8	CARD_DETECT	CARD_DETECT
		9	SDIO1_CDATA1	SDIO1_CDATA1
		10	SDIO1_CDATA0	SDIO1_CDATA0
		11	SDIO1_CDATA3	SDIO1_CDATA3
		12	SDIO1_CDATA2	SDIO1_CDATA2
		13	Gnd	Gnd
		14	SDIO1_CCMD	SDIO1_CCMD
		15	433_IN	433_IN
		16	Gnd	Gnd
		17	SW_ON/OFF	SW_ON/OFF
		18	SDIO1_CCLK_OUT	SDIO1_CCLK_OUT
		19	SET_GPIO04	SET_GPIO04
		20	Gnd	Gnd
		21	Gnd	Gnd
		22	Gnd	Gnd
		23	+3.3V	+3.3V
		24	SDIO1_VOUT	SDIO1_VOUT
P14	K1	1	Gnd	Gnd
		2	Gnd	Gnd
		3	SW_ON/OFF	Restore factory set key signal
		4	SW_ON/OFF	Restore factory set key signal
P15	K2	1	Gnd	Gnd
		2	SET_GPIO04	Anti disassembly key signal

BRD\_XMDZ-CZ-BLK18EV3-0307E-RING-V1\_01





sign	Socket	Specific No	Interface Description	Function
P6	J1	1	VOP	Horn signal+
		2	VON	Horn signal-
P7	J2	1	IR_CUT1	IR_CUT signal 1
		2	IR_CUT2	IR_CUT signal 2
P8	J4	1	UART0_RXD	UART0_RXD
		2	UART0_TXD	UART0_TXD
		3	Gnd	Gnd
P9	J7	1	+5V_BQ	+5V_BQ
		2	Gnd	Gnd
P10	J9	1	GND	GND
		2	MIC_P	Microphone signal
P11	J14	1	+3.3V	3.3V Power output
		2	+3.3V	3.3V Power output
		3	Gnd	Gnd
		4	Gnd	Gnd
		5	SET_GPIO04	Anti disassembly key signal
		6	Gnd	Gnd
		7	SW_ON/OFF1	Restore factory set key signal
		8	SD0_CLK/SFC_INPUT_SEL	SD clock
		9	433_IN	433 signal
		10	Gnd	Gnd
		11	Gnd	Gnd
		12	SD0_CMD	SD0_CMD
		13	SD0_D3	SD0_D3
		14	SD0_D2	SD0_D2
		15	SD0_D1	SD0_D1
		16	SD0_D0	SD0_D0

		17	SD_EN	SD_EN
		18	SD0_CARD_DETECT	SD0_CARD_DETECT
		19	Gnd	Gnd
		20	Gnd	Gnd
		21	Gnd	Gnd
		22	+5V_IN	+5V_IN
		23	+5V_IN	+5V_IN
		24	+5V_IN	+5V_IN
P12	J16	1	+3.3V_PIR	+3.3V_PIR
		2	GND	GND
		3	GND	GND
		4	SET_GPIO03	SET_GPIO03
		5	MCU_RLED	MCU_RLED
		6	MCU_BED1	MCU_BED1