

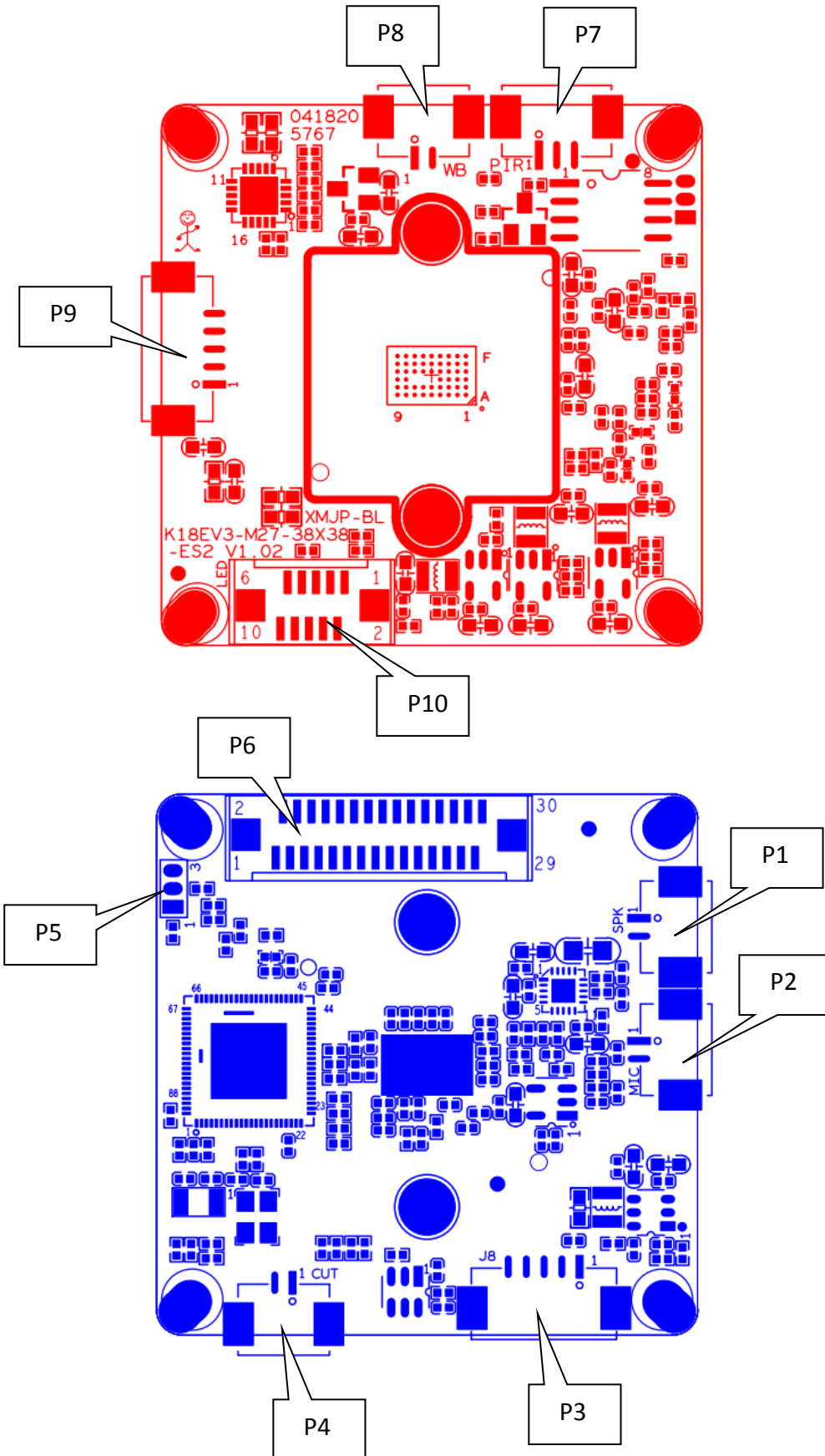
LPG-ES3
3.0M Low Power Camera module
Features:

- 3.0M resolution, clear and delicate image;
- Support PIR human infrared sensing;
- Support app remote wake-up;
- Support IR-CUT;
- Support solar power supply duration (need external solar power panel);
- Support WiFi connections;
- Support 2D/3D noise reduction,digital wide dynamic;;
- Advanced H.265AI video compression,Super low rate,high definition quality of image;
- Professional anti-lightning,conform to GB/T17626.5 and IEC61000-4-5.
- Support mobile phone monitoring(iOS, Android);
- Support cloud technology,easy to achieve network penetration,fro in-line and alarm information pushed


Parameters:

Model	LPG-ES3
System structure	Embedded RTOS, dual-core 32-bit DSP (Hi3518EV300),pure hard compression ,watch dog
Sensor	3.0M 1/2.7"Q03 CMOS sensor ,color 0.001Lux@F1.2,black/white 0.0001Lux@F1.2
Video compression	H.265AI coding,support dual stream,AVI;0.1M-8Mbps variable
Image output	Main stream: 2288*1288@12fps; sub-stream: 640*360@12fps
Shutter	1/50(1/60)s to 1/10,000s
Lens	N/A
Day and night	Support IR-CUT
Noise reduction	Support 2D/3D
Wide dynamic	Support
Auto iris	N/A
Audio compression	G.711 standard compression,support two-way Bidirectional Talk,support for audio and video synchronization
Audio interface	1ch input,level:2Vp-p,impedance:1kΩ,support sound pick-up input;1ch output,impedance:16Ω,30mw,support microphone;
Network interface	N/A
Extension interface	N/A
Singal interface	one IR-CUT interface
PTZ interface	N/A
Alarm I/O	N/A
Wireless interface	1 *Wireless interface,Support WiFi connections
Reset interface	Support
Storage mode	Local TF card storage, up to 128G; cloud storage
Reliability	Comprehensive lightning protection, 7 * 24 hours 65 °C high temperature stable and reliable testing
Intelligence analysis	Support PIR human infrared sensing,customizing other intelligent functions
Other function	Support cloud technology,easy to achieve network penetration,fro in-line and alarm information pushed
ONVIF	N/A
Mobile monitoring	Support multiple mobile monitoring (iOS, Android)
Power	Rechargeable lithium battery power supply
Dimension	24mm*45mm+38mm*38mm
Other	N/A

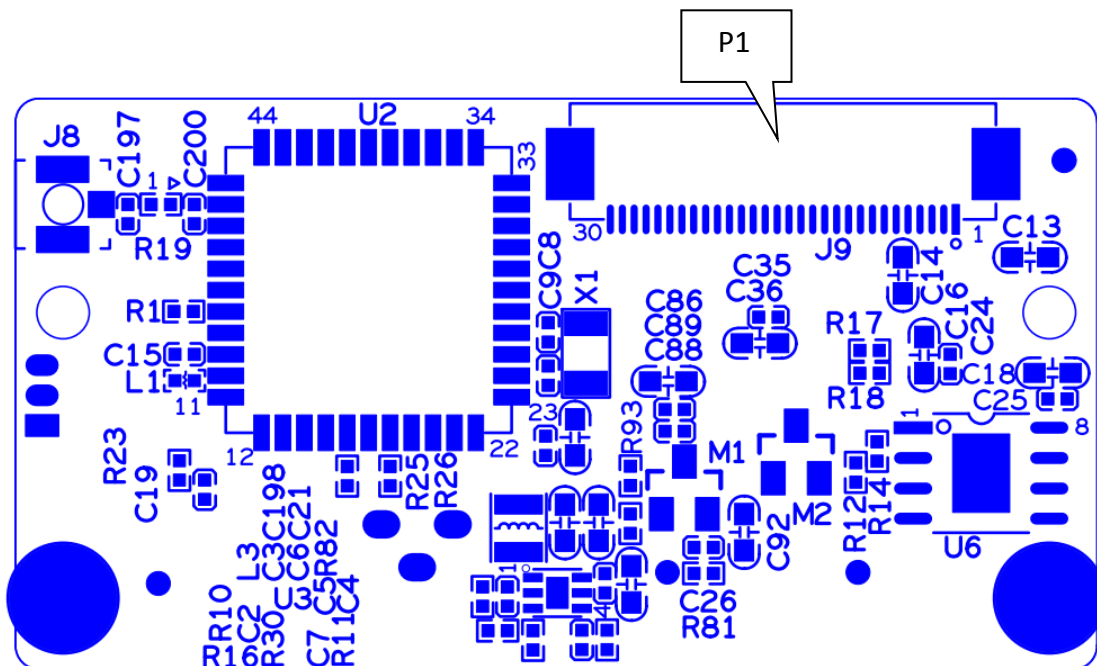
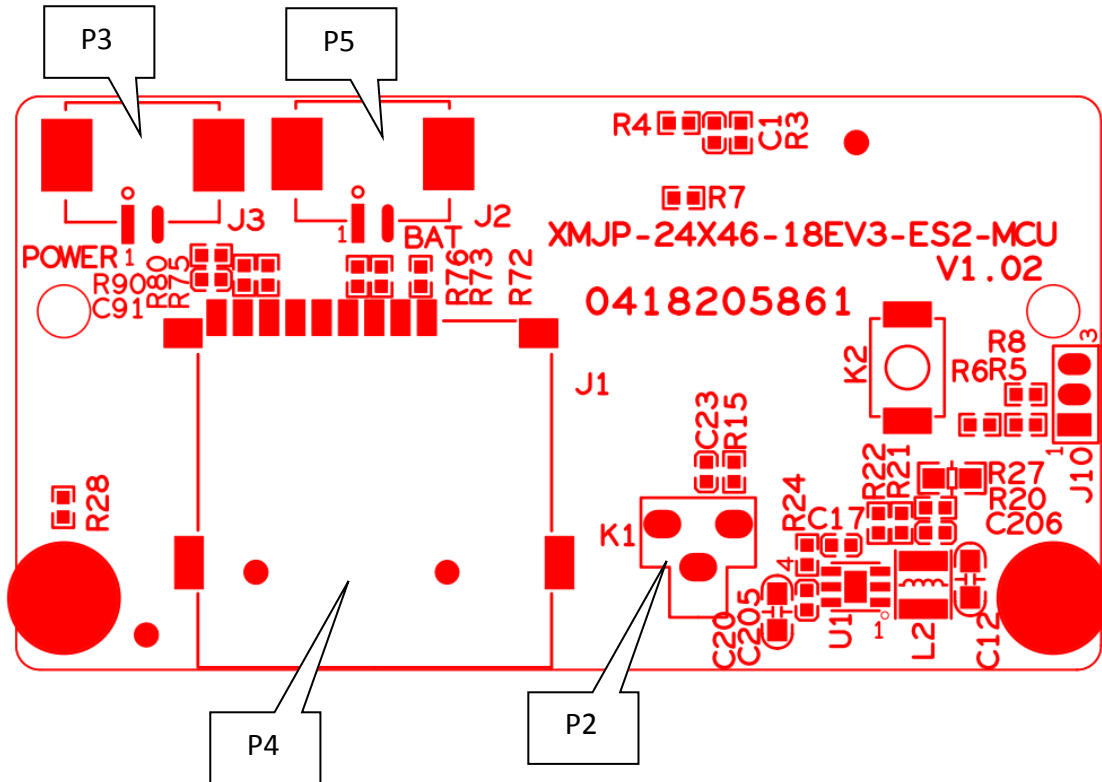
XMJP-BLK18EV3-M27-38X38-ES2-V1_02-Interface description



sign	Socket	Specific No	Interface Description	Function
P6	J4	1	SD1_CLK	wifi clock
		2	GND	GND
		3	SD1_CMD	WiFi command
		4	SD1_DO	Wifi signal
		5	GND	GND
		6	MCU_POWER_EN	Power enable
		7	PIR_IN	PIR sensing
		8	GND	GND
		9	CARD_DETECT	SD card detection
		10	SD_EN	SD card enable
		11	SDIO1_CDATA3	SD card data
		12	SDIO1_CDATA0	SD card data
		13	SDIO1_CDATA1	SD card data
		14	SDIO1_CDATA2	SD card data
		15	SDIO1_CCMD	SD card command
		16	SDIO1_CCLK_OUT	SD card clock output signal
		17	GND	GND
		18	SD1_HOST_INT0	WiFi interrupt signal
		19	MCU_LED1	LED lamp
		20	MCU_LED2	LED lamp
		21	SW_ON/OFF	switch
		22	GND	GND
		23	WB_IN	microwave signal
		24	GND	GND
		25	3.3V	3.3V power supply
		26	+5V_LI	4.2V lithium battery
		27	GND	GND
		28	GND	GND
		29	+5VBQ	4.2V power supply
		30	+5VBQ	4.2V power supply
P5	J5	1	UART0_RXD	Serial port
		2	UART0_TXD	Serial port
		3	GND	GND

P1	J6	1	VOP	Horn signal positive
		2	VON	Horn signal negative
P10	J3	1	GND	GND
		2	+5V_BQ	4.2V power supply
		3	3.3V	3.3V power supply
		4	3.3V	3.3V power supply
		5	GND	GND
		6	GND	GND
		7	LED_EN	Led input enable
		8	ADC_IN	Photosensitive signal
		9	MCU_LED1	LED lamp
		10	MCU_LED2	LED lamp
P2	J7	1	GND	GND
		2	MIC_P	MIC positive
P7	J1	3	Pir	PIR output signal
		2	地	GND
		1	3.3v_pir	PIR power supply
P3	J8	1	+5V_M2	Vertical motor power supply 4.2V
		2	V_MOT08	Vertical motor signal
		3	V_MOT07	Vertical motor signal
		4	V_MOT06	Vertical motor signal
		5	V_MOT05	Vertical motor signal
P4	J9	1	ICUT_P	ICUT signal
		2	ICUT_N	ICUT signal
P9	J2	1	+5V_M1	Horizontal motor power supply 4.2V
		2	4C	Horizontal motor signal
		3	3C	Horizontal motor signal
		4	2C	Horizontal motor signal
		5	1C	Horizontal motor signal
P8	J10	1	WB_IN	microwave signal
		2	+5V_BQ	4.2v power supply

XMJP-24X46-18EV3-ES2-MCU-V1_02-Interface description



sign	Socket	Specific No	Interface Description	Function
P1	J9	30	SD1_CLK	wifi clock
		29	GND	GND
		28	SD1_CMD	WiFi command
		27	SD1_D0	Wifi signal
		26	GND	GND
		25	MCU_POWER_EN	Power enable
		24	PIR_IN	PIR sensing
		23	GND	GND
		22	CARD_DETECT	SD card detection
		21	SD_EN	SD card enable
		20	SDI01_CDATA3	SD card data
		19	SDI01_CDATA0	SD card data
		18	SDI01_CDATA1	SD card data
		17	SDI01_CDATA2	SD card data
		16	SDI01_CCMD	SD card command
		15	SDI01_CCLK_OUT	SD card clock output signal
		14	GND	GND
		13	SD1_HOST_INT0	WiFi interrupt signal
		12	MCU_LED1	LED lamp
		11	MCU_LED2	LED lamp
		10	SW_ON/OFF	switch
		9	GND	GND
		8		microwave signal
		7	GND	GND
		6	3.3V	3.3V power supply
		5	+5V_LI	4.2V lithium battery
		4	GND	GND
		3	GND	GND
2	+5VBQ	4.2V power supply		
1	+5VBQ	4.2V power supply		
P2	K1	1		High level reset button
P3	J3	1	GND	GND
		2	Bat	Solar power input 5V

P4	J1	1	SDIO1_CDATA2	SD card data
		2	SDIO1_CDATA3	SD card data
		3	SDIO1_CCMD	control command
		4	3.3VSD	3.3V power supply
		5	SDIO1_CCLK_OUT	Clock signal output
		6	GND	GND
		7	SDIO1_CDATA0	SD card data
		8	SDIO1_CDATA1	SD card data
		9	CARD_DECT	SD card detection
P5	J2	1	GND	GND
		2	+5V_LI	Battery positive socket