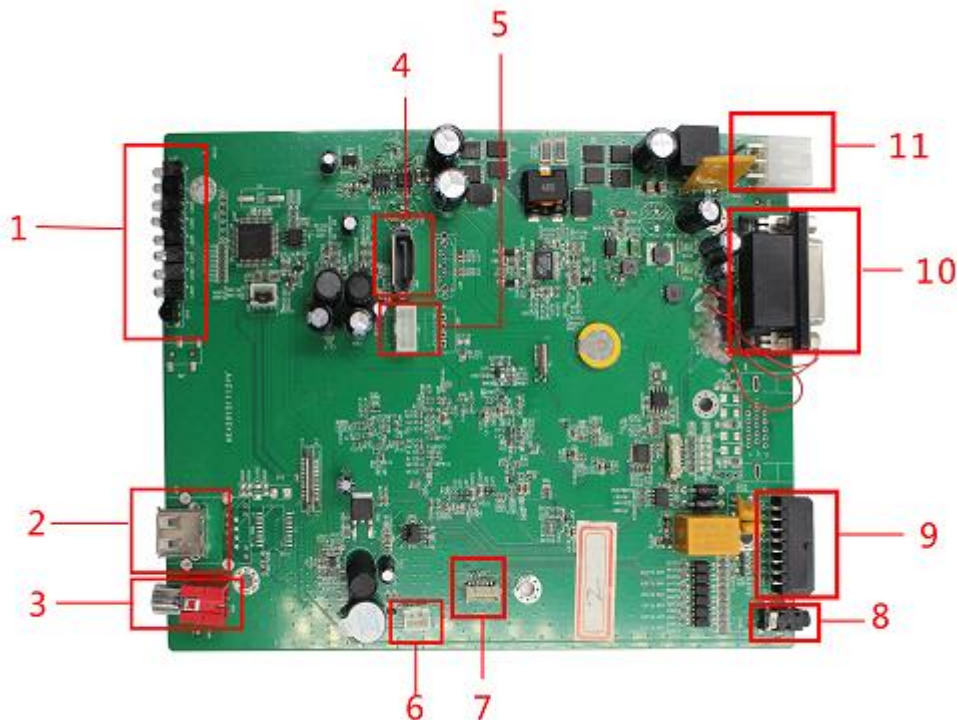


## MVB7004L-LM Motherboard



1、 Power Indicator 2、 USB 3、 video output 4、 SATA 5、 SATA power supply expansion element 6、 Power 7、 Network expansion element 8、 GPS 9、 IO 10、 audio\*video input,power output 11、 power input

### Feature:

- Special function: Mobile data、 GPS data、 wide voltage、 mobile DVR player、 SDK etc.
- Compression algorithm ideal: H.264 High Profile compression algorithm, 30% decrease of stream due to advanced space-time filtering technology
- Playback quality: support 4ch 720P real-time recording,1ch 720P real-time playback.
- Main and Sub Stream: Main stream for local storage, ensure image quality; Sub-stream for real-time network transmission, easy to solve bandwidth bottleneck problem.
- Display: support TV output
- Operation interface: similar to Windows operating style
- Network: Powerful network services and perfect support (WEB, Client, SDK), easy to achieve interoperability.
- Differentiation: Boot screen free replacement, more than twenty languages, over 10 sets of GUI interface, ten kinds of remote control, available in dozens of button panel, which make our products different from others.
- Others: Perfect circuit protection, unique triple watchdog function, ensure that the equipment never crashes; With unique black box technology, the whole process can be monitored, which greatly reduces maintenance costs.



## Specification:

|                             |                          |   |
|-----------------------------|--------------------------|---|
|                             | Model                    | MVB7004L-LM   |
| system                      | Main processor           | HI3520DV200   |
|                             | Operating system         | Embedded LINUX  |
|                             | System resources         | Simultaneous multi-channel real-time recording, playback, network operation, USB backup   |
| interface                   | user interface           | support 16-bit true color graphical menu interface and mouse operation  |
|                             | preview screen           | 1/4   |
| video                       | video standards          | PAL (625line, 50f/s) ; NTSC (525line, 60f/s)  |
|                             | video compression        | H.264(High Profile)   |
|                             | display quality          | monitor: D1   |
|                             | playback quality         | 720P/D1   |
|                             | encode capacity          | 4ch 720P  |
|                             | decode capacity          | 1ch 720P  |
| audio                       | audio compression        | G.711A  |
|                             | bidirectional talk       | supported   |
| Record&playback             | record mode              | manual>alarm>motion detection>timing  |
|                             | local playback           | Any channel playback simultaneously (1-4ch)   |
|                             | search mode              | Time/calendar/event/channel search  |
| Storage&backup              | space occupation         | video: CIF 4~5G/ day*channel, D1 8~10G/ day*channel;<br>audio: 691.2M/ day*channel  |
|                             | record storage           | USB removable hard disk   |
|                             | backup mode              | Network backup、USB Burn   |
| interface                   | video input              | 4ch   |
|                             | video output             | 1ch RCA (1.0Vp-p,75Ω),one wire connection   |
|                             | audio input              | 4ch   |
|                             | audio output             | 1ch (200-3000mV,5K)   |
|                             | alarm input              | 4ch high level, 2ch switch  |
|                             | alarm output             | 1ch   |
|                             | net interface            | Expansion interface reserved  |
|                             | PTZ control              | One RS485、one RS232   |
|                             | usb                      | One USB   |
| Mobile interface &functions | GPIO                     | Support vehicle name、 speed、 turn light、 vehicle door、 brake、 Steering Information and other signals input; support vehicle information OSD overlay、 storage(optional) etc. |
|                             | GPS Module (alternative) | external GPS module, support GPS data overlay、 timing etc.  |
|                             | others                   | support boot up/shut down delay, boot up/shut down timing   |
| complement                  | player                   | mobile exclusive player,Support google map,showing vehicle running track and data.  |



|        | SDK                   | Free SDK for second development  |
|--------|-----------------------|--|
| others | Power supply          | Wide voltage input 8V~32V, 15% overvoltage protection, 500MS 60V voltage surge |
|        | External power supply | Support 4* 12V controllable power supply for external camera                   |
|        | Power consumption     | <10W   |
|        | Working temperature   | 0°C-+55°C  |
|        | Working humidity      | 10%—90%  |
|        | Atmospheric pressure  | 86kpa—106kpa   |
|        | Dimension             | 188mm * 148mm  |
|        | weight                | 165g   |