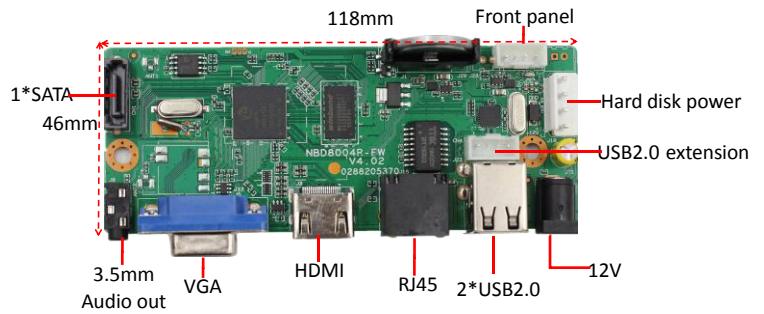


NBD8009S-ULA
9ch 5M H.265 NVR Board

Feature:

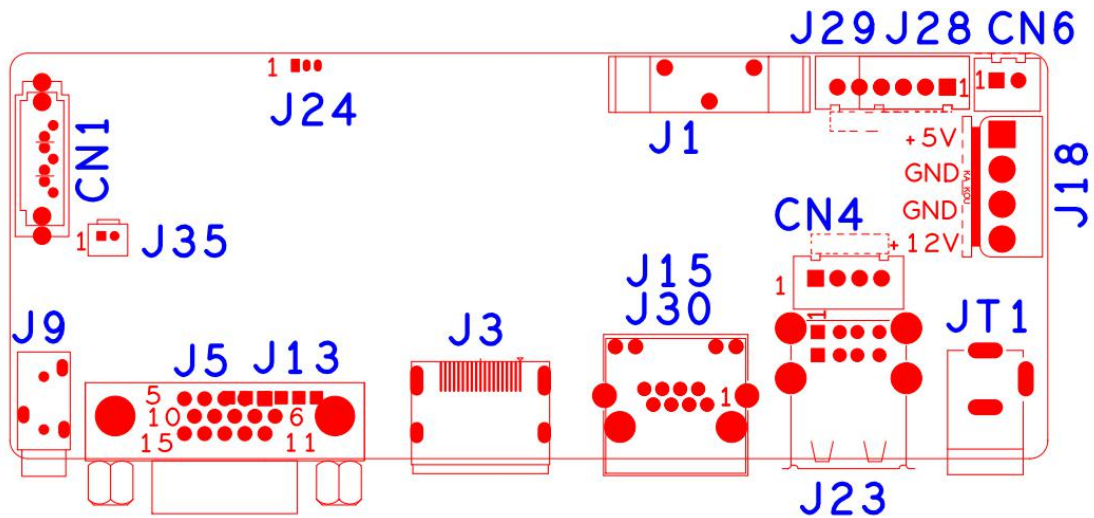
- Support HDMI /VGA HD output;
- Support ONVIF;access third party;
- Support web, CMS, center platform management software MYEYE, provide SDK development;
- Support multiple cloud technology, network penetration, alarm information pushed to your phone and other functions;
- Support multiple network services (support DHCP, FTP, DNS, DDNS, NTP, UPNP, EMAIL, IP searches, Alarm Center, etc.);



Parameters:

Model: NBD8009S-ULA

	Model	NBD8009S-ULA
System	Main processor	Hi3536DV100
	Operating System	Embedded Linux
	System resources	Simultaneous multi-channel real-time recording, playback, network operation, USB backup
Interface	Operator interface	16-bit true color graphic menu operation interface, support mouse operation
	Preview	1/4/8/9
Video	Video input (IP)	9*5M
	Access bandwidth	64Mbps
	Forwarding bandwidth	36Mbps
	Video compression	H.265AI/H.265+(compatible H.265/H.264)
	Display quality	Max:2560*1440
	Playback quality	5M/1080P
	VR	Unsupport
Audio	human shape / Face	Support(depend on camera)
	Audio compression	G.711A
Record & playback	Intercom	unsupport
	Recording mode	Manual>Alarm>Dynamic Detection>Timing
	Localpayback(real-time+ Un real-time)	5M (1+1) /4M(2+1)/3M (2+2) /1080P (4+2)
	Search mode	Search by Time/Calendar/Event/Channel
	Record storage	HDD、 Network
External interface	Backup mode	Network backup, USB hard disk, USB burner, SATA burner
	Video output	1ch VGA, 1ch HDMI HD output
	Audio I/O	0/1 (3.5MM audio output)
	Alarm I/O	0/0
	Network interface	1*RJ45 10M/100M Adaptive Ethernet port
	USB interface	2*USB2.0 ports(one USB extension interface is reserved)
	HDD	1* SATA(Up to 14TB for each disk)
	ESATA	No
Other	Serial interface	No
	ONVIF	Support
	Power supply	12V/2A
	Power Consumption	<10W(Without HDD)
	Work environment	Temperature:0℃ —55℃ , Humidity:10%—90%RH , Atm:86kpa—106kp
	Dimension	118mm*46mm
Weight	A total of about 44g	



sign	Function	Interface Description			
CN1	SATA				
J24	Debug UART	1:RXD	2:TXD	3:GND	
J1	Battery holder				
J28	4Pin front panel interface	1:+3.3	2:GND	3:LINK_LED	4: REC_LED
J18	Hard disk power socket	1:+5	2:GND	3:GND	4:+12
JT1	12V input				
J23	2*USB				
CN4	USB Extension interface				
J15&J30	RJ45				
J3	HDMI				
J5	VGA				
J9	3.5mm Audio output interface				