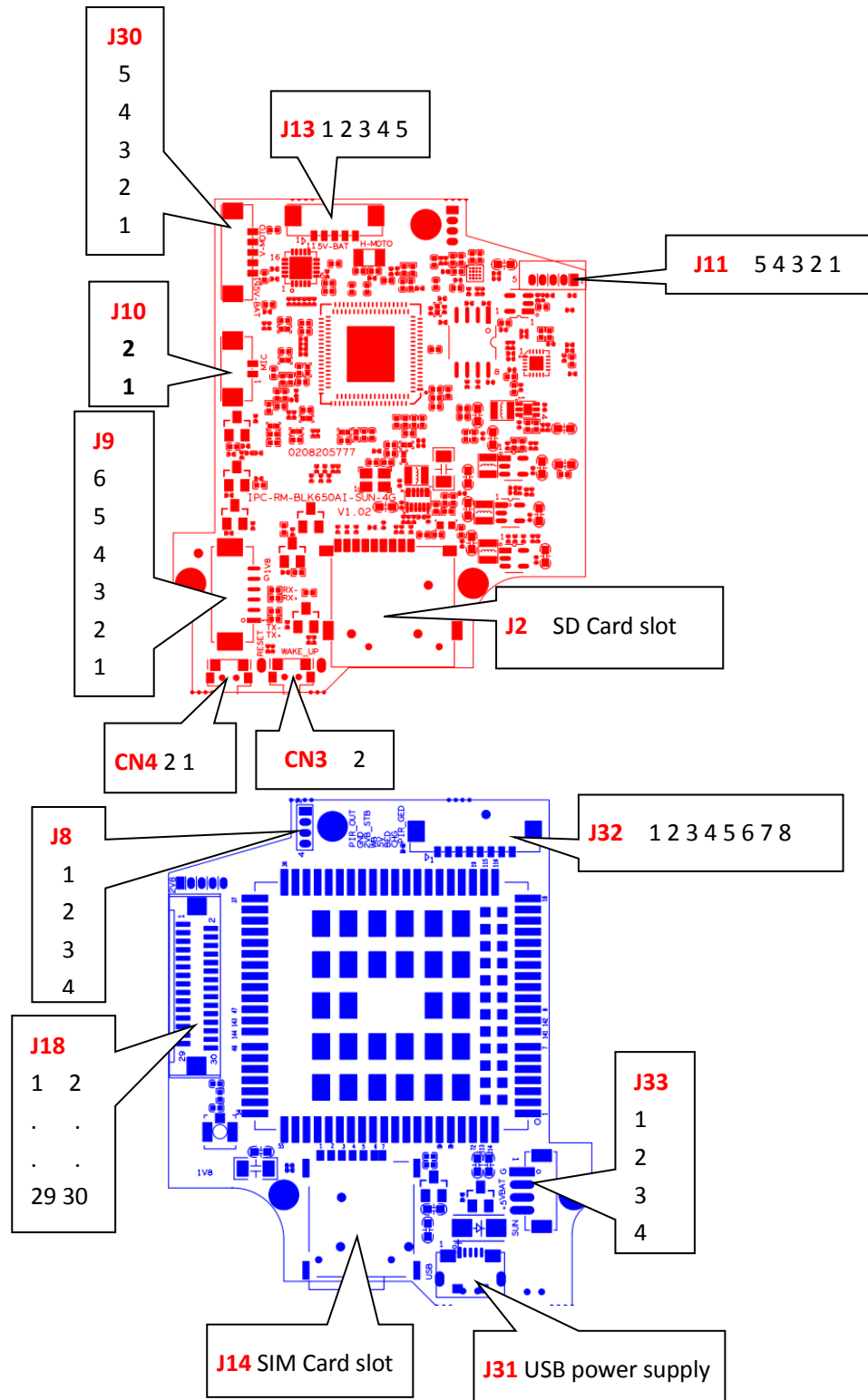


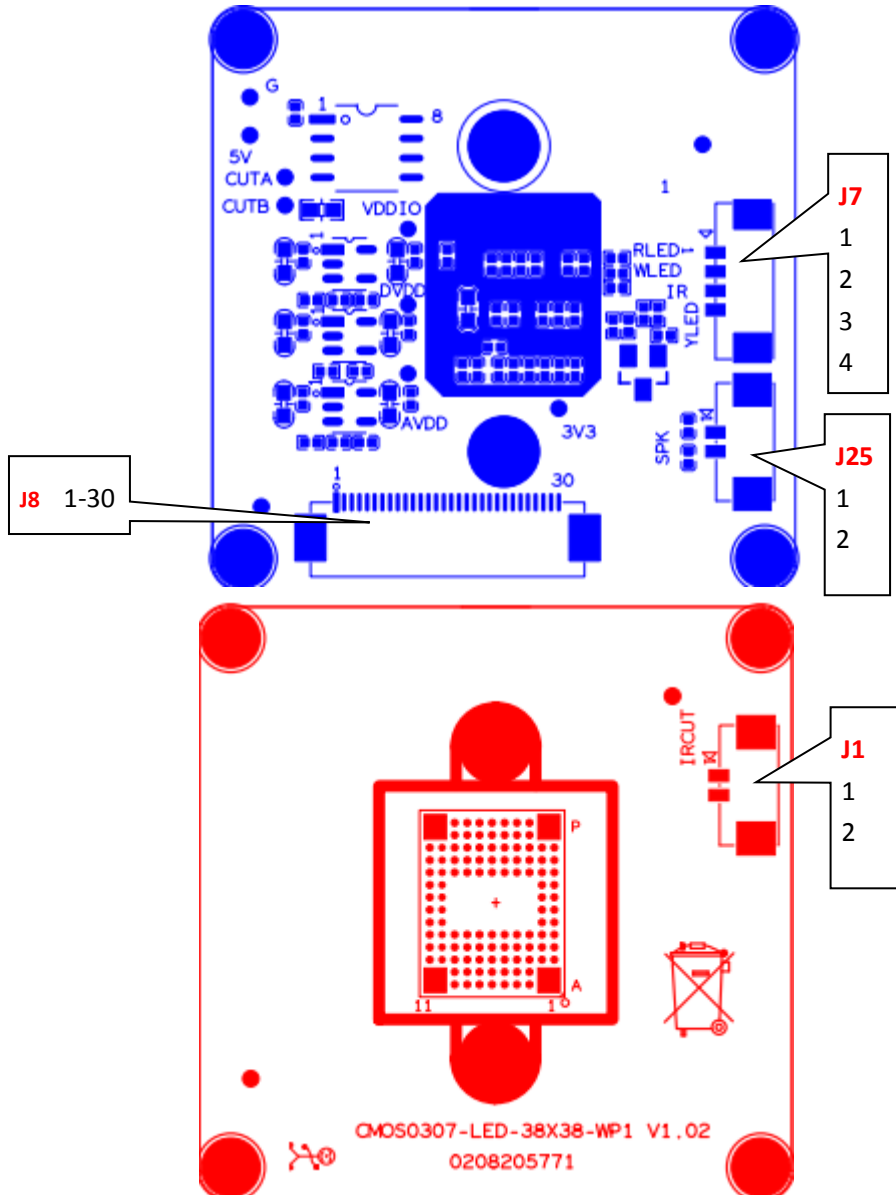
## LPG-QG2-4GSEU Interface description



| Socket | Specific No | Interface Description | Function  |
|--------|-------------|-----------------------|---|
| J10    | 1           | MIC_G                 | MIC interface                                       |
|        | 2           | MIC_IN                |   |
| J30    | 1           | 5V                    | Positive pole of 5V power supply                    |
|        | 2           | OUT1                  | Vertical motor drive interface                      |
|        | 3           | OUT2                  |   |
|        | 4           | OUT3                  |   |
|        | 5           | OUT4                  |   |
| J13    | 1           | 5V                    | Positive pole of 5V power supply                    |
|        | 2           | OUT1                  | Horizontal motor drive interface                    |
|        | 3           | OUT2                  |   |
|        | 4           | OUT3                  |   |
|        | 5           | OUT4                  |   |
| J1     | 1           | ETHTX+                | ETH interface                                       |
|        | 2           | ETHTX-                |   |
|        | 3           | ETHRX+                |   |
|        | 4           | ETHRX-                |   |
|        | 5           | GND                   | <b>GND</b>  |
|        | 6           | 1V8                   | <b>1.8V</b>   |
| J11    | 1           | 2V8                   | MCU off line burning interface                      |
|        | 2           | SWDIO                 |   |
|        | 3           | SWDCLK                |   |
|        | 4           | GND                   |   |
|        | 5           | NRST                  |   |
| J2     | 1           | SD                    | TF Card slot  |
| K1     | 1           | WAKE_UP               | Wake up button                                      |
| K2     | 1           | RESET                 | Reset button  |
| J15    | 1           | SENO_MD1N             | Master control docking sensor board data output bit |
|        | 2           | SENO_MD1P             |   |
|        | 3           | SENO_MD2N             |   |
|        | 4           | SENO_MD2P             |   |
|        | 5           | SENO_MD3N             |   |
|        | 6           | SENO_MD3P             |   |
|        | 7           | CLKP                  |   |
|        | 8           | CLKN                  |   |
|        | 9           | SENO_MDOP             |   |

|     |    |             |                                |
|-----|----|-------------|--------------------------------|
|     | 10 | SENO_MDON   |                                |
|     | 11 | GND         | GND                            |
|     | 12 | CDS         | Photosensitive signal          |
|     | 13 | SENSOR_CLK  | Sensor clock                   |
|     | 14 | GND         | GND                            |
|     | 15 | I2C_SDA     | I2C control signal             |
|     | 16 | I2C_SCL     |                                |
|     | 17 | IRCUT_A     | IRCUT control signal           |
|     | 18 | IRCUT_B     | IRCUT control signal           |
|     | 19 | SENSOR_VS   | Sensor column                  |
|     | 20 | SENSOR_HS   | Sensor line                    |
|     | 21 | Sensor_pclk | Sensor_pclk                    |
|     | 22 | GND         | GND                            |
|     | 23 | SPKN        | Loudspeaker interface          |
|     | 24 | SPKP        |                                |
|     | 25 | MCU_WLED    | MCU control infrared signal    |
|     | 26 | MCU_RLED    | MCU control white light signal |
|     | 27 | RED         | indicator light                |
|     | 28 | GND         | GND                            |
|     | 29 | 3V3         | 3.3V supply pin                |
|     | 30 | 5V          | 5V supply pin                  |
| J31 | 1  | USB         | USB debugging power supply     |
| J33 | 1  | GND         | GND                            |
|     | 2  | VBAT        | Battery powered                |
|     | 3  | +5V         | 5V powered                     |
|     | 4  | SOL         | Solar power supply detection   |
| J8  | 1  | GND         | GND                            |
|     | 2  | TX          | TX                             |
|     | 3  | RX          | RX                             |
|     | 4  | BOOTSEL     | BOOTSEL                        |
| J32 | 1  | PIR         | Alarm PIR                      |
|     | 2  | GND         | GND                            |
|     | 3  | 2V8         | Indicator power supply         |
|     | 4  | WB          | Microwave alarm                |
|     | 5  | GND         | GND                            |
|     | 6  | BED_GPIO88  | Power on indicator signal      |
|     | 7  | 5V          | Lamp panel power supply        |
|     | 8  | 5V          |                                |
| J14 | 1  | SIM         | SIM Card slot                  |

### LPG-QG2-4GSEU Interface description



| Socket                | Specific No | Interface Description | Function  |
|-----------------------|-------------|-----------------------|---|
| J7 (Butt light panel) | 1           | RLED                  | Infrared control                                    |
|                       | 2           | WLED                  | White light control                                 |
|                       | 3           | RED_CTRL              | Photosensitive signal                               |
|                       | 4           | YLED                  | Networking indicator signal                         |
| J25                   | 1           | SPK                   | Loudspeaker interface                               |
|                       | 2           | SPK                   |   |
| J1                    | 1           | IRCUT_A               | IRCUT interface                                     |
|                       | 2           | IRCUT_B               |   |
| J15                   | 1           | SENO_MD1N             | Master control docking sensor board data output bit |
|                       | 2           | SENO_MD1P             |   |
|                       | 3           | SENO_MD2N             |   |
|                       | 4           | SENO_MD2P             |   |
|                       | 5           | SENO_MD3N             |   |
|                       | 6           | SENO_MD3P             |   |
|                       | 7           | CLKP                  |   |
|                       | 8           | CLKN                  |   |
|                       | 9           | SENO_MDOP             |   |
|                       | 10          | SENO_MDON             |   |
|                       | 11          | GND                   | GND   |
|                       | 12          | CDS                   | Photosensitive signal                               |
|                       | 13          | SENSOR_CLK            | Sensor clock  |
|                       | 14          | GND                   | GND   |
|                       | 15          | I2C_SDA               | I2C control signal                                  |
|                       | 16          | I2C_SCL               |   |
|                       | 17          | IRCUT_A               | IRCUT control signal                                |
|                       | 18          | IRCUT_B               | IRCUT control signal                                |
|                       | 19          | SENSOR_VS             | Sensor column                                       |
|                       | 20          | SENSOR_HS             | Sensor line   |
|                       | 21          | Sensor_pclk           | Sensor_pclk   |
|                       | 22          | GND                   | GND   |
|                       | 23          | SPKN                  | Loudspeaker interface                               |
|                       | 24          | SPKP                  |   |
|                       | 25          | MCU_WLED              | MCU control infrared signal                         |
|                       | 26          | MCU_RLED              | MCU control white light signal                      |
|                       | 27          | RED                   | indicator light                                     |
|                       | 28          | GND                   | GND   |
|                       | 29          | 3V3                   | 3.3V supply pin                                     |
|                       | 30          | 5V                    | 5V supply pin                                       |