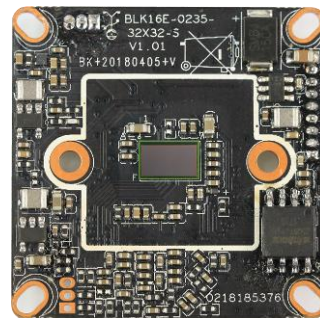


IPG-80HE20PS-SL

2.0M H.265 IP Camera Module

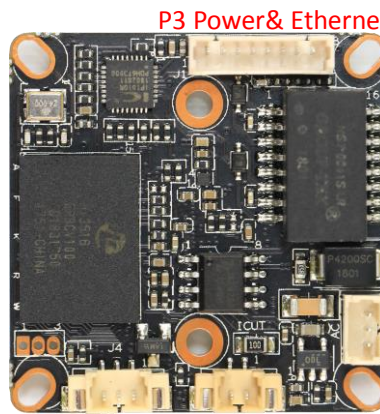
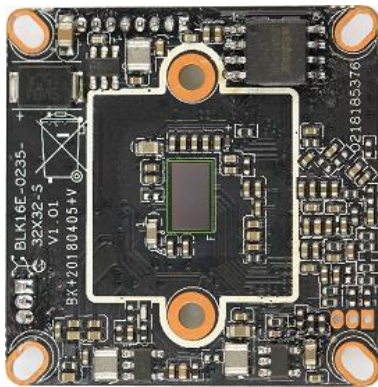
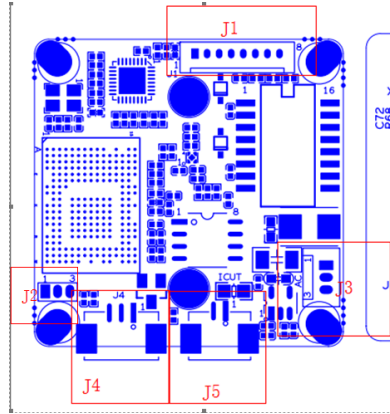
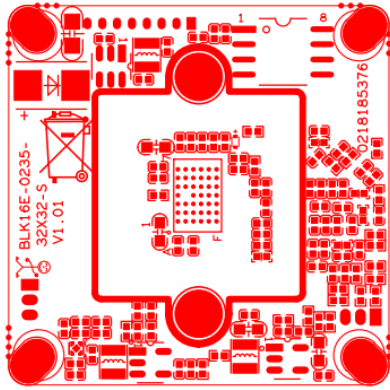
Features:

- 1080P HD resolution,clear and fine images,32mm*32mm;
- Support 2D/3D noise reduction,digital wide dynamic;
- Advanced H.265+/H.264 video compression,Super low rate,high definition quality of image;
- Professional anti-lightning,conform to GB/T17626.5 and IEC61000-4-5.
- Support ONVIF;access third party;
- Support various mobile monitoring(iPhone,Android);
- Provide web、CMS、center platform management software MYEYE,provide SDK development
- Support cloud technology,easy to achieve network penetration,from in-line and alarm information pushed



Parameters:

Model	IPG-80HE20PS-SL
System structure	Embedded RTOS,dual-core 32bit DSP(Hi3516EV100),pure hard compression ,watch dog
Sensor	2.0M CMOS sensor ,color 0.1Lux@F1.2,black/white 0.01Lux@F1.2
Video compression	H.265+/H.264,support dual stream,AVI;0.1M~8Mbps variable;1~30f/s variable
Image output	Main stream: 1920*1080@20fps,1280*720@25fps; sub-stream: 704*576@25fps;
Shutter	1/50(1/60)s to 1/10,000s
Lens	N/A
Day and night	Support IR-CUT, IR-CUT coil has an internal resistance of 20 ohms, the power-on time is less than 200ma, and the voltage is 3.5V-6V
Noise reduction	Support 2D/3D
Wide dynamic	Support digital
Auto iris	N/A
Audio compression	G.711,support bidirectional talk,audio&video synchronization
Audio interface	1ch input,level:2Vp-p,impedance:1kΩ,support sound pick-up input;1ch output,impedance:16Ω,30mw,support microphone
Network interface	1*RJ45 10/100M adaptive Ethernet port;support RTSP/FTP/PPPOE/DHCP/DDNS/NTP/UPnP etc
Extension interface	N/A
Singal interface	One photo resistance interface,one IR-CUT interface ,support photo resistance signal and IR-CUT links to IR
PTZ	N/A
Motor interface	N/A
Alarm I/O	N/A
WIFI interface	N/A
Reset interface	N/A
SD Card	N/A
Reliability	Comprehensive lightning protection, 7 * 24 hours 65 °C high temperature stable and reliable testing
Intelligence analysis	N/A
Other function	Support WEB,OSD,live video transmission,motion detect and IO alarm,front-end storage/playback/download, and center reminder and image linkage,support JPEG capture; united remote client monitoring sofaware、MYEYE;perfect SDK;
ONVIF	Support
Mobile monitoring	Support multiple mobile monitoring (iOS, Android)
Power	DC12V/2A input, power consumption:≤3W,
Dimension	32mm*32mm
Other	Support POE power supply, not support any custom, The drive voltage of the light board is at 3.3V



sign	Socket	Specific No	Interface Description	Function
P1	J2	1	UART0_RXD	
		2	UART0_TXD	
		3	GND	GND
P2	J3	1	AC_OUTL	AC_OUT
		2	AC_INL	MIC_P
		3	GND	GND
P3	J1	1	LED/PHYAD0	LED
		2	LED/PHYAD1	LED
		3	ETHTX+	Ethernet signal
		4	ETHTX-	Ethernet signal
		5	THTR+	Ethernet signal
		6	THTR-	Ethernet signal
			GND	GND
	+12V	12V DC input		
P4	J5	1	BOUT	IR CUT
		2	AOUT	IR CUT
P5	J4	1	Infrared input	Infrared input
		2	GND	GND
		3	3.3V	3.3V