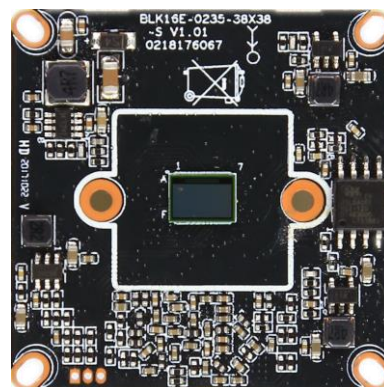


IPG-80HE20PS-A

2.0M H.265 IP Camera Module

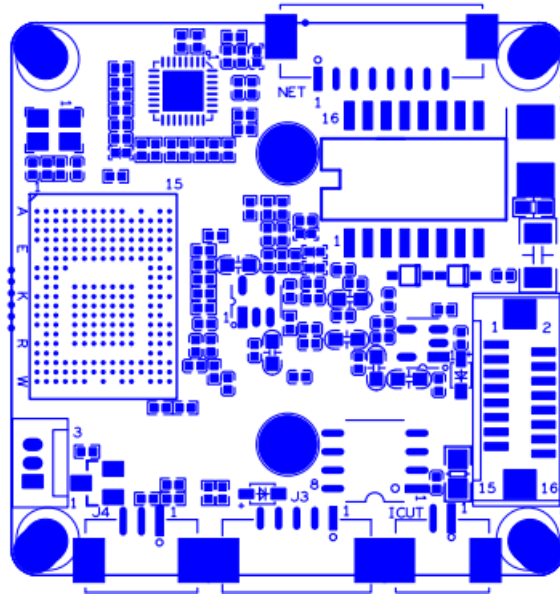
Features:

- 1080P HD resolution,clear and fine images;
- Support 2D/3D noise reduction,digital wide dynamic;
- Advanced H.265+/H.265X video compression,Super low rate,high definition quality of image;
- Professional anti-lightning,conform to GB/T17626.5 and IEC61000-4-5.
- Support ONVIF;access third party;
- Support various mobile monitoring(iPhone,Android);
- Provide web、CMS、center platform management software MYEYE,provide SDK development
- Support cloud technology,easy to achieve network penetration,fro in-line and alarm information pushed

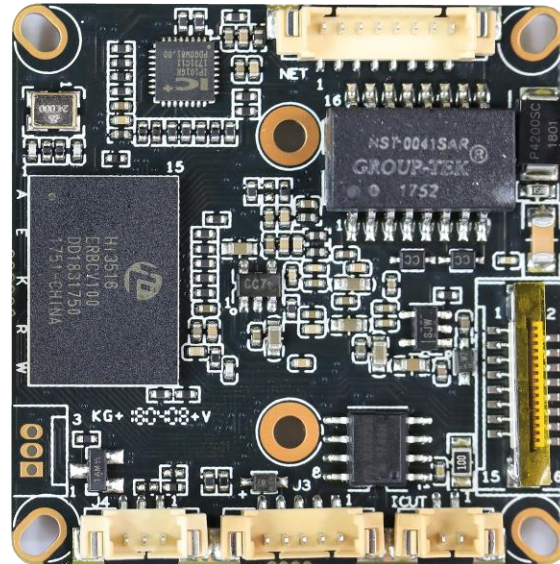


Parameters:

Model	IPG-80HE20PS-A
System structure	Embedded RTOS,dual-core 32bit DSP(Hi3516EV100),pure hard compression ,watch dog
Sensor	2.0M CMOS sensor ,color 0.1Lux@F1.2,black/white 0.01Lux@F1.2
Video compression	H.265+/H.265X,support dual stream,AVI;0.1M~8Mbps variable;1~30f/s variable
Image output	Main stream: 1920*1080@20fps,1280*720@25fps; sub-stream: 704*576@25fps;
Shutter	1/50(1/60)s to 1/10,000s
Lens	N/A
Day and night	Support IR-CUT, IR-CUT coil has an internal resistance of 20 ohms, the power-on time is less than 200ma, and the voltage is 3.5V-6V
Noise reduction	Support 2D/3D
Wide dynamic	Support digital
Auto iris	N/A
Audio compression	G.711,support bidirectional talk,audio&video synchronization
Audio interface	1ch input,level:2Vp-p,impedance:1kΩ,support sound pick-up input;1ch output,impedance:16Ω,30mw,support microphone
Network interface	1*RJ45 10/100M adaptive Ethernet port;support RTSP/FTP/PPPOE/DHCP/DDNS/NTP/UPnP etc
Extension interface	Extensions: SD card, Alarm1/1, Reset, RTC, USB
Singal interface	One photo resistance interface,one IR-CUT interface ,support photo resistance signal and IR-CUT links to IR
PTZ	N/A
Motor interface	N/A
Alarm I/O	1/0 (support alarm input and video link to background)
WIFI interface	N/A
Reset interface	N/A
SD Card	N/A
Reliability	Comprehensive lightning protection, 7 * 24 hours 65 °C high temperature stable and reliable testing
Intelligence analysis	N/A
Other function	Support WEB,OSD,live video transmission,motion detect and IO alarm,front-end storage/playback/download, and center reminder and image linkage,support JPEG capture; united remote client monitoring sofaware、MYEYE;perfect SDK;
ONVIF	Support
Mobile monitoring	Support multiple mobile monitoring (iOS, Android)
Power	DC12V/2A input, power consumption:≤3W,
Dimension	38mm*38mm
Other	Support POE power supply, not support any custom, The drive voltage of the light board is at 3.3V



P1 Power Ethernet



P6 Extension

P2 Infrared P6 Alarm Audio P3 IRcut

sign	Socket	Specific No	Interface Description	Function
P1	J3	1	LED/PHY_AD0	LED
		2	LED/PHY_AD1	LED
		3	ETHTX+	Ethernet signal
		4	ETHTX-	Ethernet signal
		5	ETHRX+	Ethernet signal
		6	ETHRX-	Ethernet signal
		7	GND	GND
		8	12V	12V DC input
P2	J4	1	Infrared input	Infrared input
		2	GND	GND

		3	+3.3V	3.3V DC input
P3	J5	1	BOUT	IRCUT output
		2	AOUT	IRCUT output
P5	J2	1	UART_RX	
		2	UART_TX	
		3	GND	GND
P6	J3	1	AC_OUT	AC_OUT
		2	AC_IN	MIC_P
		3	GND	GND
		4	ALARM_GPIO	ALARM_IN
		5	GND	GND

P7	J19	1	SD_CLK	SD_CLK
		2	SD_CMD	SD_CMD
		3	SD_DATA0	SD_DATA0
		4	SD_DATA1	SD_DATA1
		5	SD_DATA2	SD_DATA2
		6	SD_DATA3	SD_DATA3
		7	ALARM2_GPIO82	ALARM2_GPIO82
		8	GND	GND
		9	KEY_SET	KEY_SET
		10	BAT	BAT
		11	GND	GND
		12	ALARM_OUT	ALARM_OUT
		13	USB_DM	USB_DM
		14	USB_DP	USB_DP
		15	+5V	+5V
		16	USB_CONTROL	USB_CONTROL