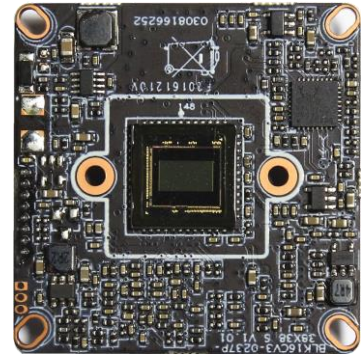


## IPG-83H20PA-A

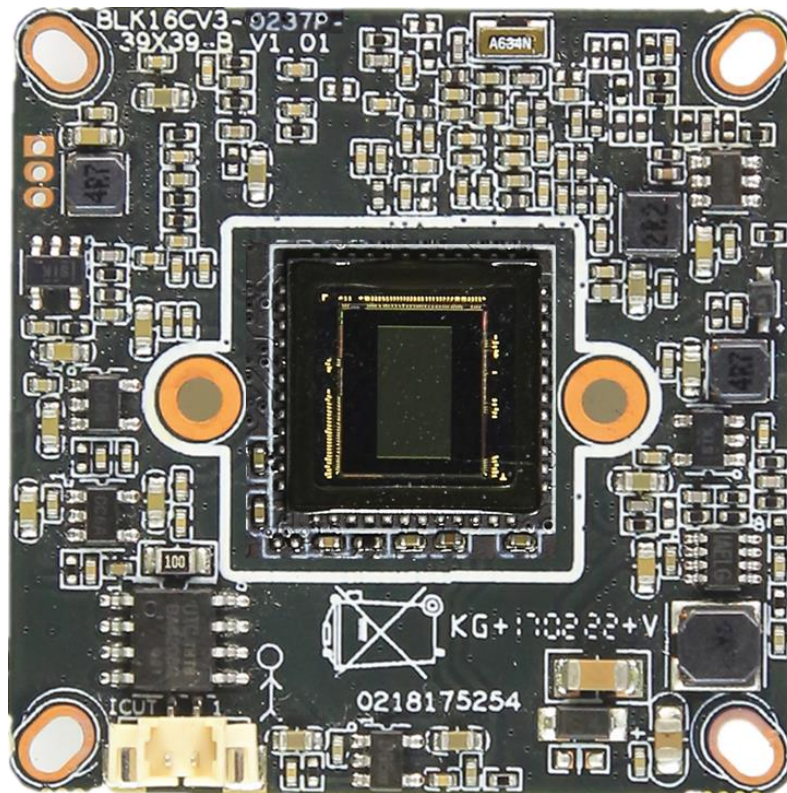
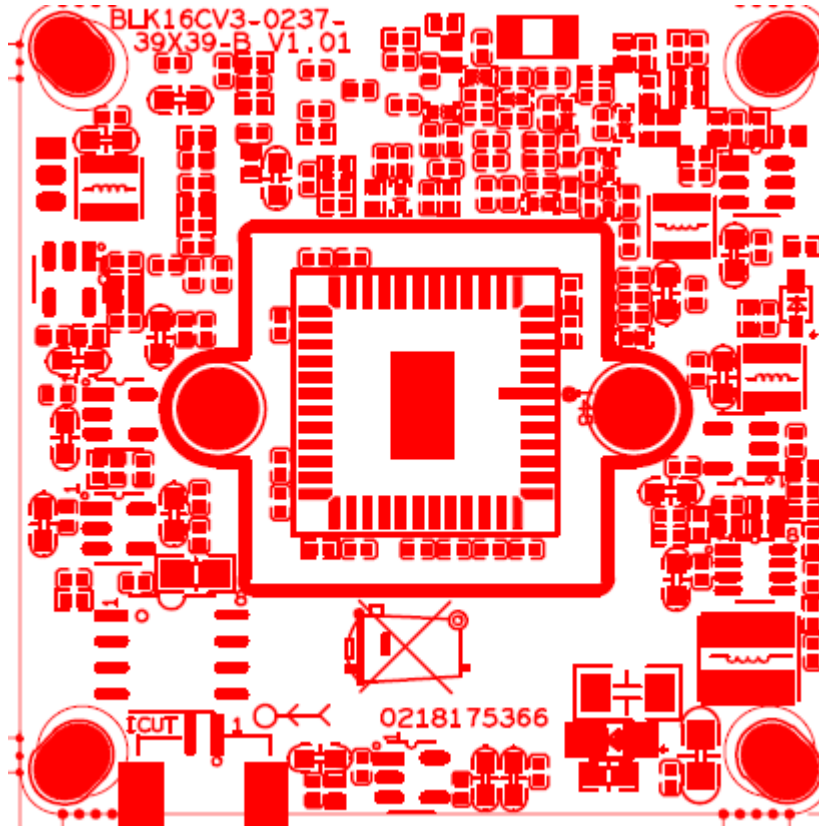
### 2.0M low illumination CMOS Network Camera

**Features:**

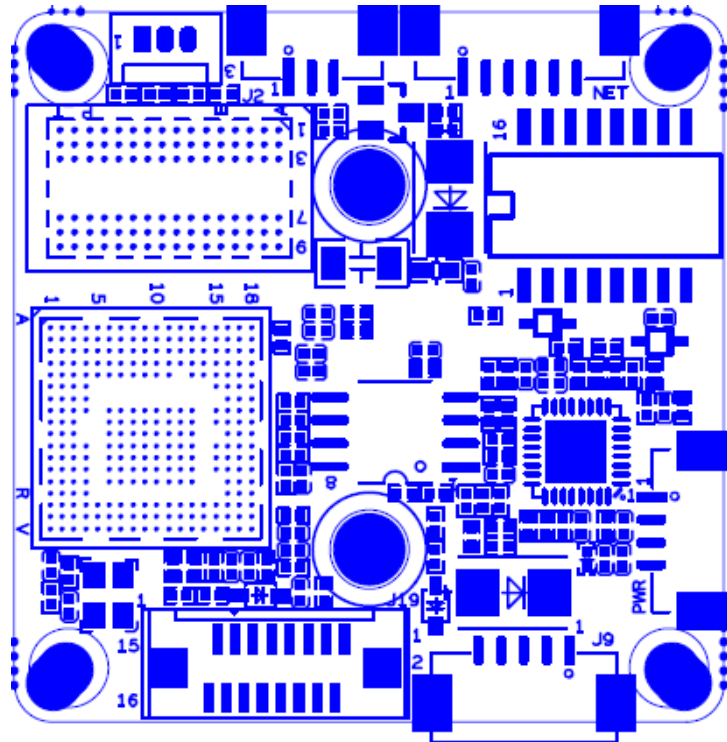
- 2M HD resolution,clear and fine images;
- Support 2D/3D noise reduction,digital wide dynamic;
- Advanced H.265/H.264 video compression,Super low rate,high definition quality of image;
- Professional anti-lightning,conform to GB/T17626.5 and IEC61000-4-5.
- Support ONVIF ,access third party;
- Support various mobile monitoring(iPhone,Android);
- Provide web、CMS、 center platform management software MYEYE,provide SDK development
- Support cloud technology,easy to achieve network penetration,fro in-line and alarm information pushed


**Parameters:**

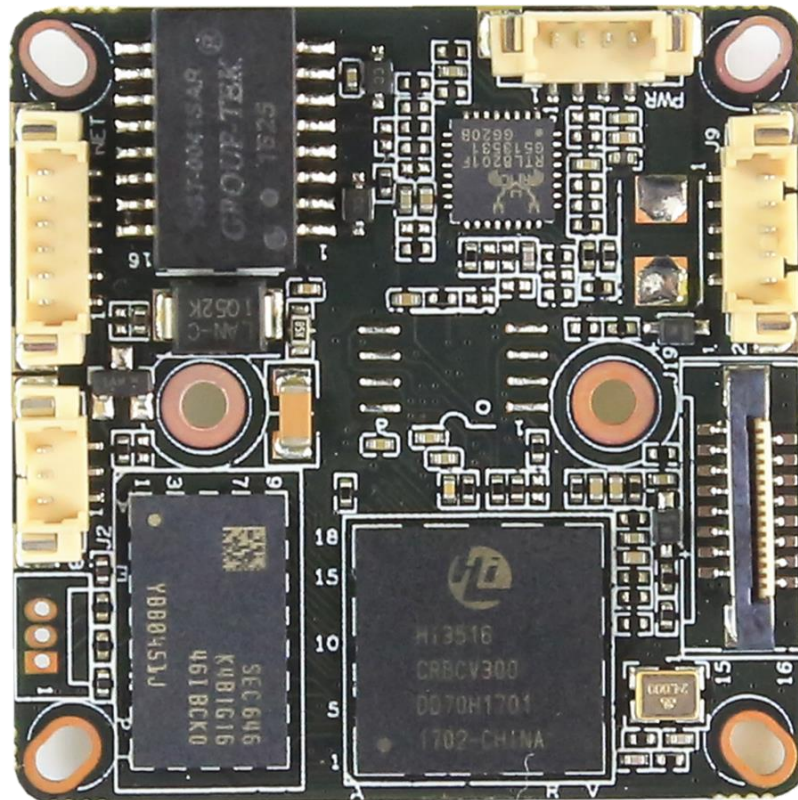
Model	IPG-83H20PA-A
System structure	Embedded RTOS,dual-core 32bit DSP(Hi3516CV300),pure hard compression ,watch dog
Sensor	2.0M 1/2.7" AR0237 low illumination CMOS sensor ,color 0.01Lux@F1.2,black/white 0.001Lux@F1.2
Video compression	H.265/H.264,support dual stream,AVI;0.1M~8Mbps variable;1~30f/s variable
Image output	Main stream: 1920*1080@25fps, 1280*720@25fps; sub-stream: 704*576@25fps;
Shutter	1/50(1/60)s to 1/10,000s
Lens	No
Day and night	Support IR-CUT, IR-CUT coil has an internal resistance of 20 ohms, the power-on time is less than 200ma, and the voltage is 3.5V-6V
Noise reduction	Support 2D/3D
Wide dynamic	Support digit
Auto iris	N/A
Audio compression	G.711,support bidirectional talk,audio&video synchronization;
Audio interface	1ch input,level:2Vp-p,impedance:1kΩ,support sound pick-up input;1ch output,impedance:16Ω,30mw,support microphone;
Network interface	1*RJ45 10/100M adaptive Ethernet port;support RTSP/FTP/PPPOE/DHCP/DDNS/NTP/UPnP etc
Extension interface	1*USB,support WIFI/3G,support SD: 1ch Alarm output; reset key; 1ch Alarm input or LED panel; RTC battery
Singal interface	One photo resistance interface,one IR-CUT interface ,support photo resistance signal and IR-CUT links to IR
PTZ	N/A
Motor interface	N/A
Alarm I/O	1/I (support alarm input and video link to background)
WIFI interface	N/A
Reset interface	N/A
SD Card	N/A
Reliability	Comprehensive lightning protection, 7 * 24 hours 65 °C high temperature stable and reliable testing
Intelligence analysis	Support
Other function	Support WEB,OSD,live video transmission,motion detect and IO alarm,front-end storage/playback/download, and center reminder and image linkage,support JPEG capture; united remote client monitoring sofaware、MYEYE;perfect SDK;
ONVIF	Support
Mobile monitoring	Support multiple mobile monitoring (iOS, Android)
Power	DC12V/2A input, power consumption:≤3W,
Dimension	38mm*38mm
Other	Support POE power supply (optional) not support any custom. The drive voltage of the light board is at 3.3V



P4 ICR



P5 power



P1 Ethernet

audio, alarm

P3 Infrared interface

extended interface

sign	Socket	Specific No	Interface Description	Function
P1	J3	1	ETHRX-	Ethernet signal
		2	ETHRX+	Ethernet signal



		3	LED/PHY_AD1	LED
		4	ETHTX-	Ethernet signal
		5	ETHTX+	Ethernet signal
		6	LED/PHY_AD0	LED
P2	J19	1	SD_CLK	SD_CLK
		2	SD_CMD	SD_CMD
		3	SD_DATA0	SD_DATA0
		4	SD_DATA1	SD_DATA1
		5	SD_DATA2	SD_DATA2
		6	SD_DATA3	SD_DATA3
		7	LED_CTRL	LED_CTRL
		8	GND	GND
		9	Key-set	Key-set
		10	BAT	RTC RTC battery input
		11	GND	GND
		12	ALARM_OUT	ALARM_OUT
		13	USB_DM	USB_DM
		14	USB_DP	USB_DP
		15	+5V	+5V
		16	USB_CONTRL	USB_CONTRL
P3	J2	1	红外输入	Infrared input
		2	GND	GND
		3	+5V	5V DC input
P4	J4	1	BOUT	IRCUT output
		2	AOUT	IRCUT output
P5	J7	1	NC	Undefined
		2	NC	Undefined
		3	GND	GND
		4	12V	12V DC input
P6	J6	1	UART_RX	
		2	UART_TX	
		3	GND	GND
P7	J9	1	AC_OUT	AC_OUT
		2	AC_IN	MIC_P
		3	GND	GND
		4	ALARM_GPIO	ALARM_IN
		5	GND	GND