

IVG-83H80NV-BE

8.0M low illumination H.265 Intelligent analysis IP Module

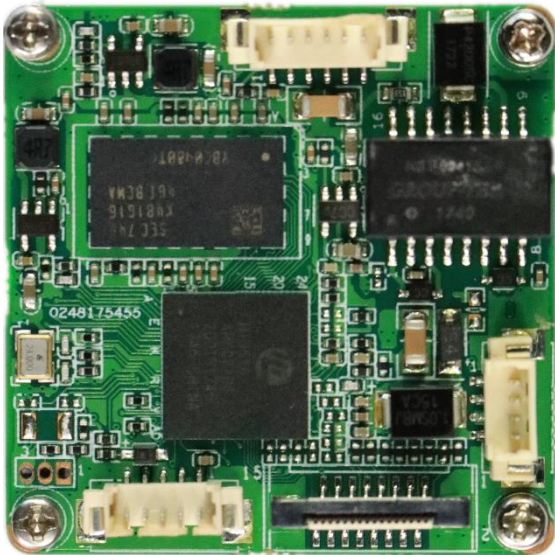
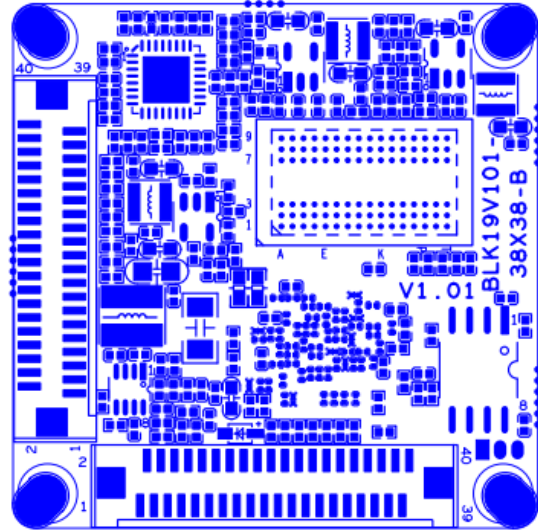
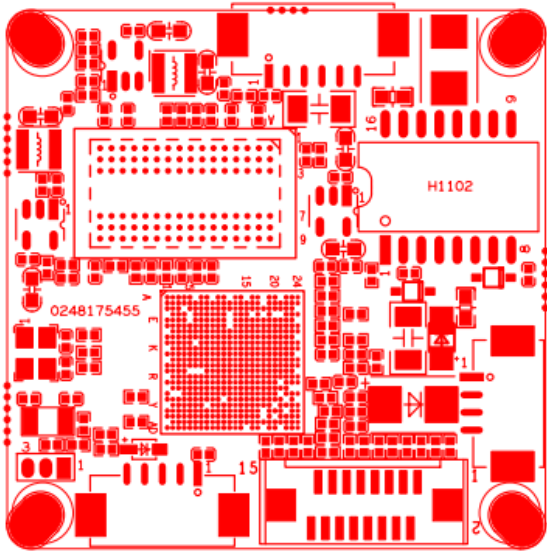
Features:

- 8.0M low illumination 4K resolution,clear and fine images;
- Support 2D/3D noise reduction,digital wide dynamic;
- Advanced H.265/H.264 video compression,Super low rate,high definition quality of image;
- Professional anti-lightning,conform to GB/T17626.5 and IEC61000-4-5;
- Support ONVIF ,access third party;
- Support various mobile monitoring(iPhone,Android);
- Provide web、CMS、center platform management software MYEYE,provide SDK development;
- Support cloud technology,easy to achieve network penetration,from in-line and alarm information pushed



Parameters:

Model	IVG-83H80NV-BE
System structure	Embedded RTOS,dual-core 32bit DSP(Hi3516AV200),pure hard compression ,watch dog
Sensor	8.0M 1/2" OS08A10 low illumination CMOS sensor ,color 0.01Lux@F1.2,black/white 0.001Lux@F1.2
Video compression	H.265/H.264,support dual stream,AVI;0.1M~10Mbps variable
Image output	Main stream: 3840*2160@15fps,2592*1944@25fps,1920*1080@25fps; sub-stream: 1280*720@25fps,704*576@25fps
Shutter	1/50(1/60)s to 1/10,000s
Lens	N/A
Day and night	Support IR-CUT, IR-CUT coil has an internal resistance of 20 ohms, the power-on time is less than 200ma, and the voltage is 3.5V-6V
Noise reduction	Support 2D/3D
Wide dynamic	Support
Auto iris	N/A
Audio compression	G.711,support bidirectional talk,audio&video synchronization
Audio interface	1ch input,level:2Vp-p,impedance:1kΩ,support sound pick-up input;1ch output,impedance:16Ω,30mw,support microphone
Network interface	1*RJ45 10/100M adaptive Ethernet port;support RTSP/FTP/PPPOE/DHCP/DDNS/NTP/UPnP etc
Extension interface	1*USB,support WIFI/3G,support SD;1ch Alarm output;reset key;1ch Alarm input or LED panel;RTC battery
Singal interface	One photo resistance interface,one IR-CUT interface ,support photo resistance signal and IR-CUT links to IR
PTZ	N/A
Motor interface	N/A
Alarm I/O	1/0(support alarm input and video link to background)
WIFI interface	N/A
Reset interface	N/A
SD Card	N/A
Reliability	Comprehensive lightning protection, 7 * 24 hours 65 °C high temperature stable and reliable testing
Intelligence analysis	Alarm line,alarm region,goods stranded,video block,fuzzy detection,scene change
Other function	Support WEB,OSD,live video transmission,motion detect and IO alarm,front-end storage/playback/download, and center reminder and image linkage,support JPEG capture; united remote client monitoring sofaware、MYEYE;perfect SDK;
ONVIF	Support
Mobile monitoring	Support multiple mobile monitoring (iOS, Android)
Power	DC12V/2A input, power consumption:≤3W
Dimension	38mm*38mm



Socket	Specific No	Interface Description
J3	1	ETHRX-
	2	ETHRX+
	3	LED/PHY_AD1
	4	ETHTX-
	5	ETHTX+
	6	LED/PHY_ADO
J1	1	NC
	2	NC
	3	GND
	4	12V
J14	1	AC_OUT
	2	MIC_P
	3	GND

	4	ALMIN_GPI0144
	5	GND
J19	1	SD0_CCLK_OUT
	2	SD0_CCMD
	3	SD0_CDATA0
	4	SD0_CDATA1
	5	SD0_CDATA2
	6	SD0_CDATA3
	7	LED_GPI057
	8	GND
	9	SET_GPI056
	10	BAT
	11	GND
	12	ALMOUT_GPI0145
	13	USB_DM
	14	USB_DP
	15	+5V
	16	USB_CONTROL
J12	1	+12V
	2	+12V
	3	GND
	4	GND
	5	+5V
	6	GND
	7	MIPI0_CKP/VIO_DATA7
	8	MIPI0_D3P/VIO_DATA6
	9	MIPI0_D3M/VIO_DATA5
	10	MIPI1_CKM/VIO_DATA4
	11	MIPI1_CKP/VIO_DATA3
	12	MIPI0_D2P/VIO_DATA2
	13	MIPI0_D2M/VIO_DATA1
	14	MIPI0_D0P/VIO_DATA0
	15	MIPI0_D1M/VIO_HS
	16	MIPI0_D1P/VIO_CLK
	17	MIPI0_DOM/VIO_VS
	18	GND
	19	SENSOR0_CLK
	20	SPI0_CLK/I2C0_SCL
	21	SPI0_CSN
	22	SPI0_SDI
	23	NC

	24	SAR_ADC_CH1/GPI016_1
	25	GND
	26	GND
	27	GND
	28	+1.8V
	29	SPI0_SDO/I2C0_SDA
	30	MIPI1_D0M/VIO_DATA15
	31	MIPI1_D1M/VIO_DATA14
	32	MIPI1_D1P/VIO_DATA13
	33	MIPI1_D2P/VIO_DATA12
	34	MIPI1_D2M/VIO_DATA11
	35	MIPI1_D3M/VIO_DATA10
	36	MIPI1_D3P/VIO_DATA9
	37	MIPI0_CKM/VIO_DATA8
	38	IRCA1_GPIO134
	39	IRCB1_GPIO135
	40	GND
J13	1	+12V
	2	+12V
	3	GND
	4	GND
	5	+5V
	6	GND
	7	MIPI2_D2P/VI1_DATA7
	8	MIPI2_D2M/VI1_DATA6
	9	VI1_DATA5/GPI02_7
	10	VI1_DATA4/GPI02_6
	11	VI1_DATA3/GPI02_5
	12	VI1_DATA2/GPI02_4
	13	VI1_DATA1/GPI02_3
	14	VI1_DATA0/GPI02_2
	15	VI1_HS/GPI03_0
	16	VI1_CLK/GPI02_1
	17	VI1_VS/GPI02_0
	18	GND
	19	SENSOR1_CLK
	20	SPI1_CLK/I2C1_SCL
	21	SPI1_CSN
	22	SPI1_SDI
	23	NC
	24	SAR_ADC_CH2/GPI016_2
	25	GND
	26	GND

	27	GND
	28	+1.8V
	29	SPI1_SDO/I2C1_SDA
	30	MIPI2_CKM/VI1_DATA15
	31	MIPI2_CKP/VI1_DATA14
	32	MIPI2_D3M/VI1_DATA13
	33	MIPI2_D3P/VI1_DATA12
	34	MIPI2_D1M/VI1_DATA11
	35	MIPI2_D1P/VI1_DATA10
	36	MIPI2_D0P/VI1_DATA9
	37	MIPI2_DOM/VI1_DATA8
	38	IRCA2_GPIO136
	39	IRCB2_GPIO137
	40	GND