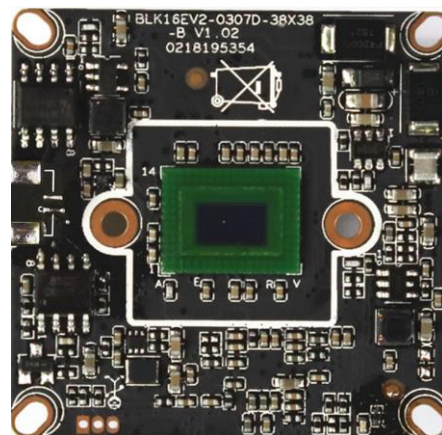


IVG-85HF20PYA-S

2.0M Black light illumination H.265 AI IP Camera Module

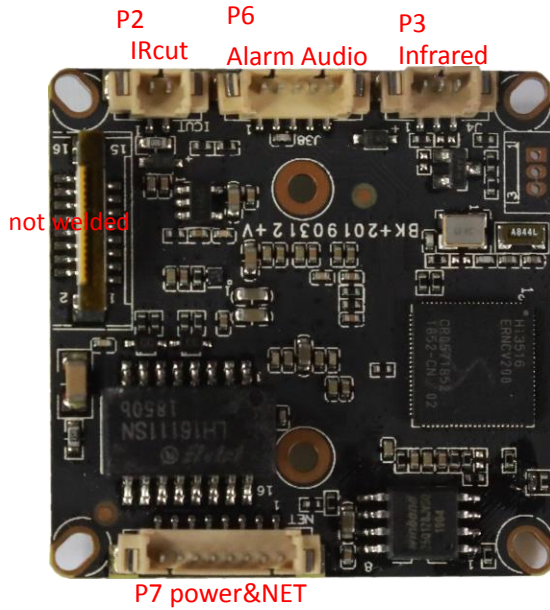
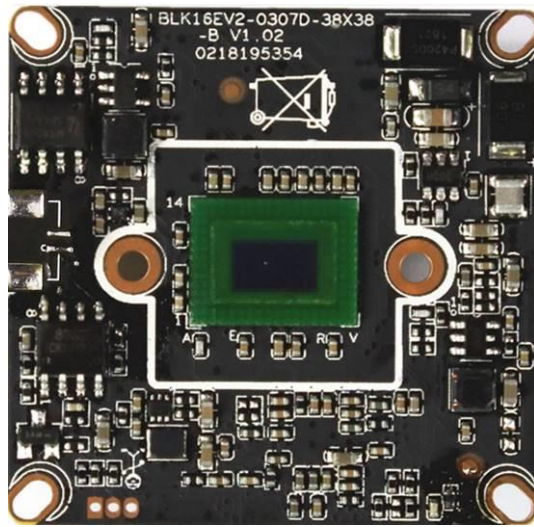
Features:

- 1080P HD Black light illumination resolution,clear and fine images;
- Support 2D/3D noise reduction,digital wide dynamic;
- Advanced H.265AI/H.265+ (Compatible with H.265/H.264) video compression,Super low rate,high definition quality of image;
- Professional anti-lightning,conform to GB/T17626.5 and IEC61000-4-5.
- Support ONVIF;access third party;
- Support various mobile monitoring(iPhone,Android);
- Provide web、CMS、center platform management software MYEYE,provide SDK development
- Support cloud technology,easy to achieve network penetration,fro in-line and alarm information pushed



Parameters:

Model	IVG-85HF20PYA-S
System structure	Embedded RTOS,dual-core 32bit DSP(Hi3516EV200),pure hard compression ,watch dog
Sensor	2.0M 1/2.8" IMX307 Black light illumination CMOS sensor,color 0.0001Lux@F1.2,black/white 0.0001Lux@F1.2
Video compression	H.265AI/H.265+ (Compatible with H.265/H.264) support dual stream,AVI;0.1M~8Mbps variable;1~30f/s variable
Image output	Main stream: 1920*1080@25fps,1280*720@25fps; sub-stream: 704*576@25fps;
Shutter	1/50(1/60)s to 1/10,000s
Lens	N/A
Day and night	Support IR-CUT
Noise reduction	Support 2D/3D, IR-CUT coil has an internal resistance of 20 ohms, the power-on time is less than 200ma, and the voltage is 3.5V-6V
Wide dynamic	Support digital Wide dynamic
Auto iris	N/A
Audio compression	G.711,support bidirectional talk,audio&video synchronization
Audio interface	1ch input,level:2Vp-p,impedance:1kΩ,support sound pick-up input;1ch output,impedance:16Ω,30mw,support microphone
Network interface	1*RJ45 10/100M adaptive Ethernet port; support RTSP/FTP/DHCP/NTP/UPnP etc
Extension interface	N/A
Singal interface	One photo resistance interface,one IR-CUT interface ,support photo resistance signal and IR-CUT links to IR
PTZ	N/A
Motor interface	N/A
Alarm I/O	1/0 (support alarm input and video link to background)
WIFI interface	N/A
Reset interface	N/A
SD Card	N/A
Reliability	Comprehensive lightning protection, 7 * 24 hours 65 °C high temperature stable and reliable testing
Intelligence analysis	Supporting human detection, face detection, and supports intelligent functions such as customized number statistics, etc.
Other function	Support WEB,OSD,live video transmission,motion detect and IO alarm,front-end storage/playback/download, and center reminder and image linkage,support JPEG capture; united remote client monitoring sofaware、MYEYE;perfect SDK;
ONVIF	Support
Mobile monitoring	Support multiple mobile monitoring (iOS、Android)
Power	DC12V/2A input, power consumption:≤3W,
Dimension	38mm*38mm
Other	Support POE power supply, not support any custom. The drive voltage of the light board is at 3.3V



sign	Socket	Specific No	Interface Description	Function
P2	J4	1	IC-CUT	IRCUT output
		2	IC-CUT	IRCUT output
P3	J2	1	IRIN_GPI01_7	IRIN
		2	GND	GND
		3	GPI02_0	GPIO/PWM
P6	J9	1	AC_OUTL	AC_OUT
		2	AC_LINEL	MIC_P
		3	GND	GND
		4	ALARM_IN1	ALARM_IN
		5	GND	GND
P1	J3	1	LED/PHY_ADO	LED
		2	LED/PHY_AD1	LED
		3	ETHTX+	Ethernet signal
		4	ETHTX-	Ethernet signal
		5	ETHRX+	Ethernet signal
		6	ETHRX-	Ethernet signal
		7	GND	GND
		8	12V	12V DC input