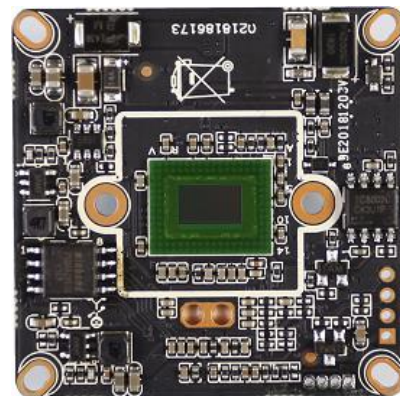
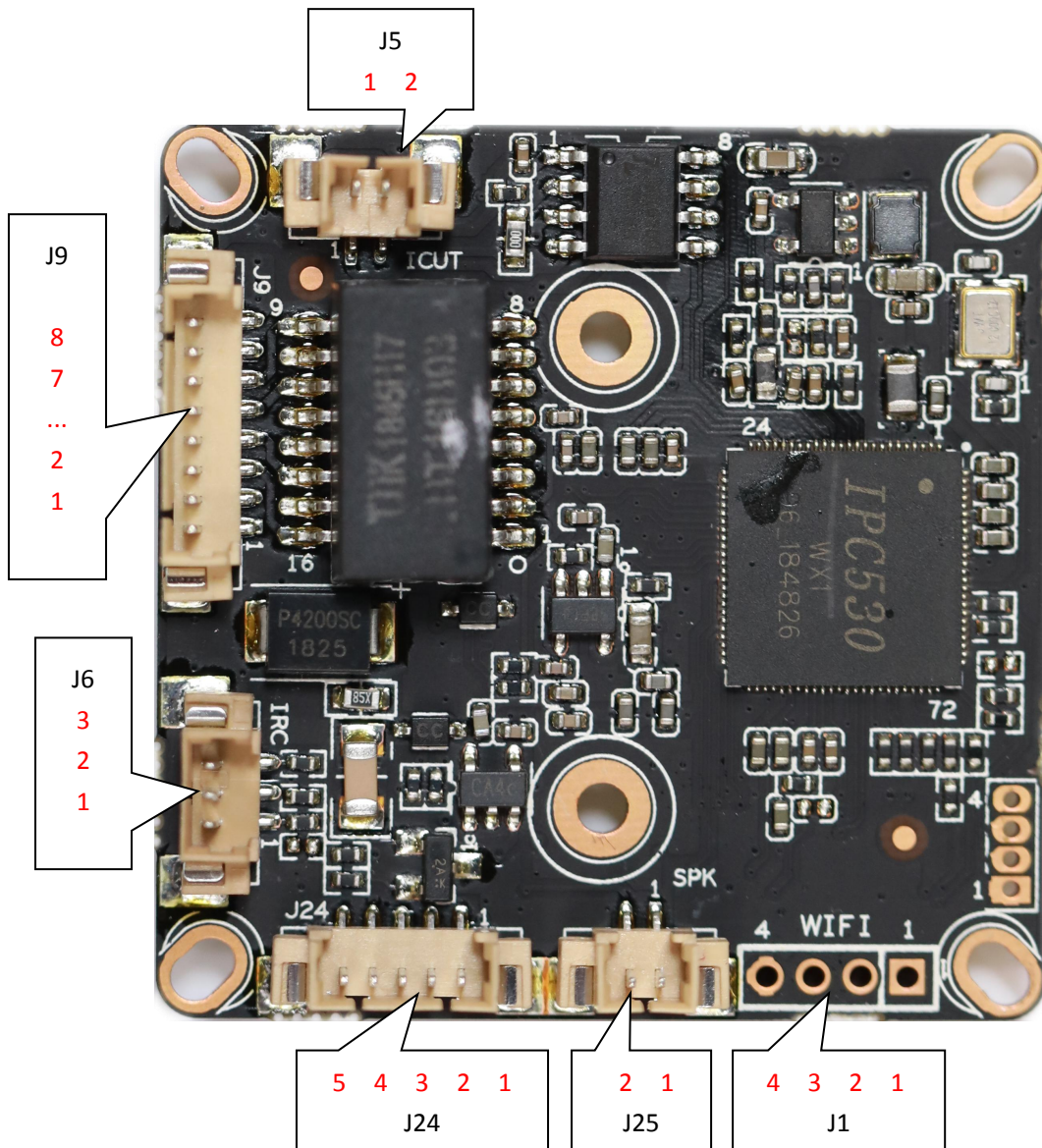


IVG-85X20PYA-SC
2.0M Black light illumination H.265 IP Camera
Features:

- Supporting human detection and tripping line detection, and supports intelligent functions such as customized face detection, number statistics, etc.
- 1080P HD Black light illumination resolution,clear and fine images;
- Support 2D/3D noise reduction,digital wide dynamic;
- Advanced H.265A1/H.265+ (Compatible with H.265/H.264) video compression,Super low rate,high definition quality of image;
- Professional anti-lightning,conform to GB/T17626.5 and IEC61000-4-5.
- Support ONVIF;access third party, Support various mobile monitoring(iPhone,Android);
- Provide web、CMS、center platform management software MYEYE,provide SDK development
- Support cloud technology,easy to achieve network penetration,fro in-line and alarm information pushed


Parameters:

Model	IVG-85X20PYA-SC
System structure	Embedded RTOS,dual-core 32bit DSP(XM530A1),pure hard compression ,watch dog
Sensor	2.0M 1/2.8" IMX307 Black light illumination CMOS sensor,color 0.0001Lux@F1.2,black/white 0.0001Lux@F1.2
Video compression	H.265A1/H.265+ (Compatible with H.265/H.264),support dual stream,AVI;0.1M~8Mpbs variable;1~30f/s variable
Image output	Main stream: 1920*1080@25fps,1280*720@25fps; sub-stream: 704*576@25fps;
Shutter	1/50(1/60)s to 1/10,000s
Lens	N/A
Day and night	Support IR-CUT,IR-CUT coil has an internal resistance of 20 ohms, the power-on time is less than 200ma, and the voltage is 3.5V-6V
Noise reduction	Support 2D/3D
Wide dynamic	Support digital
Auto iris	N/A
Audio compression	G.711,support bidirectional talk,audio&video synchronization
Audio interface	1ch input,level:2Vp-p,impedance:1kΩ,support sound pick-up input; Two-Choose-One ch output,support microphone
Network interface	1*RJ45 10/100M adaptive Ethernet port; support RTSP/FTP/DHCP/NTP/UPnP etc
Extension interface	Extensions: USB WIFI
Singal interface	One photo resistance interface,one IR-CUT interface ,support photo resistance signal and IR-CUT links to IR
PTZ	N/A
Motor interface	N/A
Alarm I/O	1/0 (support alarm input and video link to background)
WIFI interface	N/A
Reset interface	N/A
SD Card	N/A
Reliability	Comprehensive lightning protection, 7 * 24 hours -10℃~65℃high temperature stable and reliable testing
Intelligence analysis	Supporting human detection and tripping line detection, and supports intelligent functions such as customized face detection, number statistics, etc.
Other function	Support WEB,OSD,live video transmission,motion detect and IO alarm,front-end storage/playback/download, and center reminder and image linkage,support JPEG capture; united remote client monitoring sofaware、MYEYE;perfect SDK;
ONVIF	Support
Mobile monitoring	Support multiple mobile monitoring (iOS, Android)
Power	DC12V/2A input, power consumption:≤3W,
Dimension	38mm*38mm
Other	Support POE power supply, not support any custom, the drive voltage of the light board is at 3.3v



BLK530WX1-0307D-38X38-S-V1_01 Interface Description

Socket	Specific No	Interface Description	Function	
J9	1	LED0	LED/PHY_AD0	Connect the tail line of the camera module
	2	LED1	LED/PHY_AD1	
	3	ETHTX+	Ethernet signal+	
	4	ETHTX-	Ethernet signal-	
	5	ETHRX+	Ethernet signal+	
	6	ETHRX-	Ethernet signal-	
	7	GND	GND	
	8	12V	12V DC input	
J5	1	IR-CUTA	BOUT	IR_CUT

	2	IR-CUTA	AOUT	
J6	1	IR-IN	Infrared input	Connect the camera lamp board
	2	GND	GND	
	3	PWM-OUT	+3.3V	
J25	1	SPKP	speaker +	speaker
	21	SPKN	speaker -	
J24	1	AC_OUT	AC_OUT	audio
	2	AC_IN	AC_IN	
	3	GND	GND	
	4	ALARM-IN	ALARM_GPIO	
	5	ALARM-OUT	ALARM_GPIO (Reserve)	
J1	1	3.3V	WIFI Module power supply	Connect the USB WIFI Module
	2	USB_DN	USB	
	3	USB_DP	USB	
	4	GND	GND	