

IVG-HP201Y-SE

2.0M low illumination H.265 Intelligent analysis IP Module

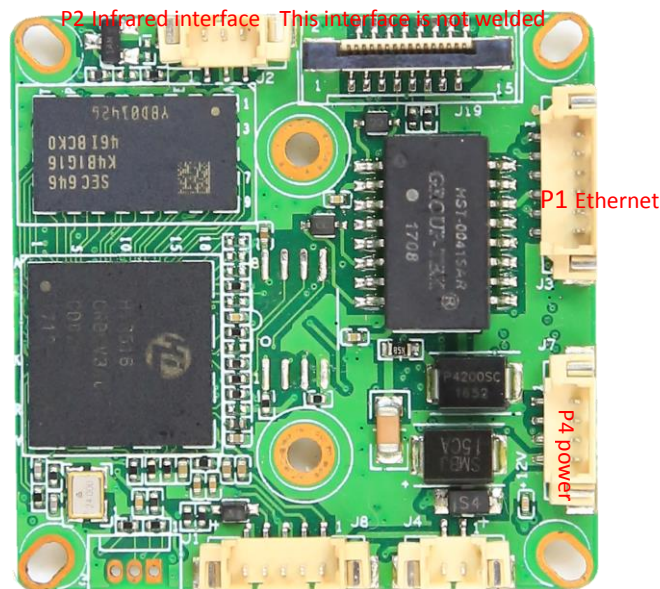
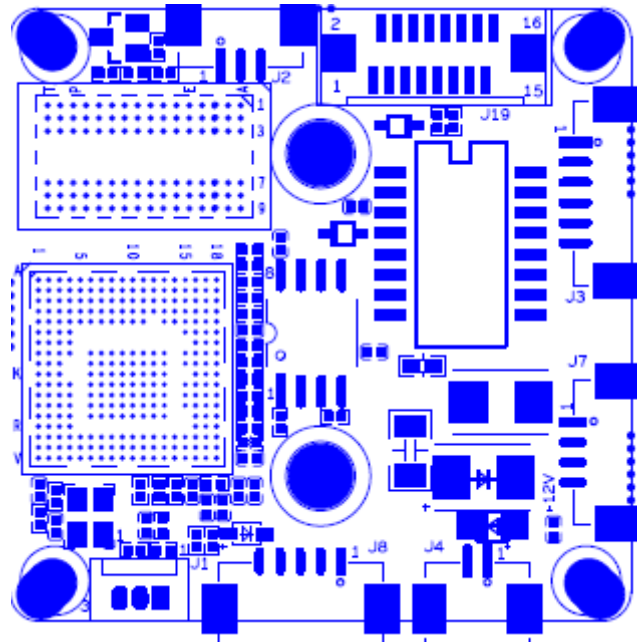
Features:

- 2.0M low illumination HD resolution,clear and fine images;
- Support multiple intelligent analysis;
- Support 2D/3D noise reduction,digital wide dynamic;
- Advanced H.265/H.264 video compression,Super low rate,high definition quality of image;
- Professional anti-lightning,conform to GB/T17626.5 and IEC61000-4-5。
- Support ONVIF ,access third party;
- Support various mobile monitoring(iPhone,Android);
- Provide web、CMS、center platform management software MYEYE,provide SDK development;
- Support cloud technology,easy to achieve network penetration,fro in-line and alarm information pushed;

Parametes:



| | |
|-----------------------|---|
| Model | IVG-HP201Y-SE |
| System structure | Embedded RTOS, dual-core 32-bit DSP (Hi3516CV300),pure hard compression ,watch dog |
| Sensor | 2.0M 1/2.9" IMX323 low illumination CMOS sensor,color 0.01Lux@F1.2,black/white 0.001Lux@F1.2 |
| Video compression | H.265/H.264 support dual stream,AVI;0.1M~8Mbps variable;1~30f/s variable |
| Image output | Main stream: 1920*1080@25fps,1280*720@25fps; sub-stream: 704*576@25fps; |
| Shutter | 1/50(1/60)s to 1/10,000s |
| Lens | No |
| Day and night | Support IR-CUT, IR-CUT coil has an internal resistance of 20 ohms, the power-on time is less than 200ma, and the voltage is 3.5V-6V |
| Noise reduction | Support 2D/3D |
| Wide dynamic | Support |
| Auto iris | N/A |
| Audio compression | G.711 standard compression,support two-way Bidirectional Talk,support for audio and video synchronization |
| Audio interface | 1ch input,level:2Vp-p,impedance:1kΩ,support sound pick-up input;1ch output,impedance:16Ω,30mw,support microphone; |
| Network interface | 1*RJ45 10/100M adaptive Ethernet port;support RTSP/FTP/PPPOE/DHCP/DDNS/NTP/UPnP etc |
| Extension interface | N/A |
| Singal interface | One photo resistance interface,one IR-CUT interface ,support photo resistance signal and IR-CUT links to IR |
| PTZ | N/A |
| Motor interface | N/A |
| Alarm I/O | 1/0(support alarm input and video link to background) |
| WIFI interface | N/A |
| Reset interface | N/A |
| SD Card | N/A |
| Reliability | Comprehensive lightning protection, 7 * 24 hours 65 °C high temperature stable and reliable testing |
| Intelligence analysis | Alarm line,alarm region,goods stranded,video block,fuzzy detection,scene change |
| Other function | Support WEB,OSD,live video transmission,motion detect and IO alarm,front-end storage/playback/download, and center reminder and image linkage,support JPEG capture: united remote client monitoring sofaware、MYEYE;perfect SDK; |
| ONVIF | Support |
| Mobile monitoring | Support multiple mobile monitoring (iOS, Android) |
| Power | DC12V/2A input, power consumption:≤3W |
| Dimension | 38mm*38mm |
| Other | Does not accept any custom. . The drive voltage of the light board is at 3.3V |



P6 Alarm Audio P3 IRcut

| sign | Socket | Specific No | Interface Description | Function |
|------|--------|-------------|-----------------------|-----------------|
| P1 | J3 | 1 | ETHRX- | Ethernet signal |
| | | 2 | ETHRX+ | Ethernet signal |
| | | 3 | LED/PHY_AD3 | LED |
| | | 4 | ETHTX- | Ethernet signal |
| | | 5 | ETHTX+ | Ethernet signal |
| | | 6 | LED/PHY_AD0 | LED |
| P2 | J2 | 1 | Infrared input | Infrared input |
| | | 2 | GND | GND |

| | | | | |
|----|----|---|----------|--------------|
| | | 3 | +5V | 5V DC input |
| P3 | J4 | 1 | BOUT | IRCUT output |
| | | 2 | AOUT | IRCUT output |
| P4 | J7 | 1 | NC | Undefined |
| | | 2 | NC | Undefined |
| | | 3 | GND | GND |
| | | 4 | 12V | 12V DC input |
| P5 | J1 | 1 | UART_RX | |
| | | 2 | UART_TX | |
| | | 3 | GND | GND |
| P6 | J6 | 1 | AC_OUT | AC_OUT |
| | | 2 | MIC_P | MIC_P |
| | | 3 | GND | GND |
| | | 4 | ALARM_IN | ALARM_IN |
| | | 5 | GND | GND |